



Designed to get the job done

BMP51 Label printer

Designed to get the job done

The Brady Advantage

When it comes to identification, safety and compliance, there's a clear advantage to working with Brady. We put our customers first in everything we do.

Our goal is to give you an unrivalled customer experience. We are relentlessly committed to performance and excellence - in our products, services and people.

Our products and solutions perform in ways that others simply can't match. Our people perform in ways that regularly exceed your expectations, and our focus and discipline work toward solid, long-term performance for our customers.

In short, Brady is the company you trust when performance matters most.

Learn more about the Brady Advantage at: www.bradyeurope.com

Table of contents

| | |
|----|--|
| 3 | BMP51 Label Printer |
| 6 | Applications |
| 10 | BMP51 Media offering |
| 12 | Electrical, voice/datacom identification |
| 18 | General & industrial identification |
| 20 | Laboratory identification |
| 29 | Master material index |
| 31 | Software |
| 32 | Printer specifications |
| 33 | BMP51 Printer, kits and accessories |
| 34 | Brady technical service |
| 35 | Brady support |



BMP51
LABEL PRINTER



Brady products are sold on the condition that the purchaser will test them in actual use and determine for himself/herself their suitability to his/her intended purpose. Brady warrants to the purchaser that Brady products are free from defects in material and workmanship but limits its obligation under this warranty to the replacement of the product which has been shown to Brady's satisfaction to have been defective at the time of its purchase.

The warranty does not extend to any persons who have acquired the product from the purchaser. It is in lieu of any other warranty, including every warranty of sale-ability, marketability or suitability for the intended purpose, and is also in lieu of any other obligation or liability on the part of Brady.

Under no circumstances will Brady be liable for losses, damage, costs or subsequent damage of whatever nature which may arise in connection with the use of, or inability to use, Brady's products.

Designed to get the job done

When you need clear, durable labels on the spot, you need the BMP51 Label Printer from Brady. It offers crisp printing, easy formatting, convenient label sizes, and portability required for electrical and datacom installations, laboratory identification, facility and safety labelling.

Get the job done **FASTER.**

Change supplies in seconds. Hassle free drop-in cartridges have both the label material & ribbon inside!

Automatic label formatting. Cartridges feature smart cell technology that tells the printer how to correctly format your label. You just drop in a cartridge and the printer calibrates the rest.

Quick to print. Prints 25.40 mm per second – which means no more waiting around for labels to print.

Durable built-in cutter. There's a self-cleaning cutter that can cut through any material with ease, and it even grips the label until you need it.

Get the job done **EASIER.**

Battery options for portability. Use with the AC power supply, AA-batteries or simply with the rechargeable Li-Ion battery which allows you to print over 3,000 labels on a single charge.

Wireless capabilities. Built-in Bluetooth® technology and the optional Wi-Fi card provide wireless printing options.

Robust software. Labelling Software enables the printer to print: bar code symbologies, time/date stamps, imported graphics, automatic data serialisation, and more.

Continuous & die-cut label materials. Whether you need to label wires, cables, panels or equipment, you can do it all with this one printer. There are 20 material types and more than 200 label parts to choose from.

Labels up to 38.10 mm wide. Make large labels that can easily be identified from a distance (or make continuous labels up to 1m long!).

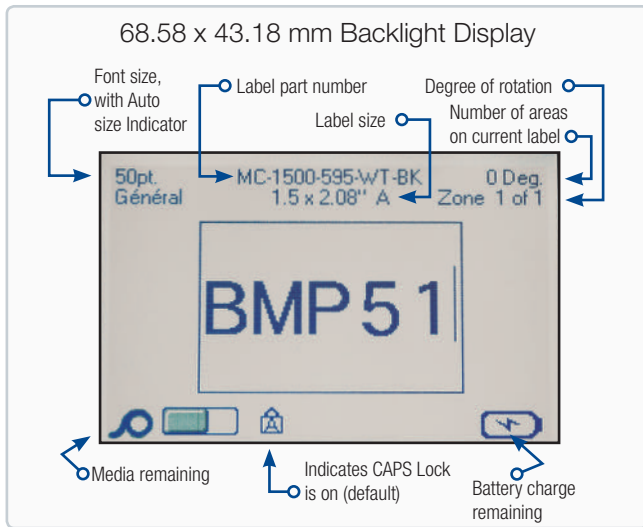
Magnet. Keep your printer handy, use the magnet to hold your printer on panel doors, metal ladders or any metal surface.

Get the job done **WITH CONFIDENCE.**

Label for the long haul. Our labels won't fade, smear or fall off – so you only need to label something once.

A rugged printer you can rely on. This printer can survive in all kinds of harsh environments, temperatures and has a rugged, drop tested construction.





**2 YEAR
WARRANTY**

Connectivity

Built-in Bluetooth card, optional wifi card for wireless printing via a network: making it quick & easy to print without being physically connected to multiple PCs.



Battery options

3 power options: AA batteries, AC adaptor or rechargeable Li-Ion battery

The printer can be powered through a designated AC power adapter. When the adapter is plugging in, it will also charge the BMP Lithium Ion Battery Pack if one is inserted in the battery compartment (it will not charge AA rechargeable batteries).



Hassle-free drop-in cartridges

Ribbon and label materials in ONE cartridge!

- Install or remove ribbon and material in one easy step
- No need to worry about having the right ribbon for your materials
- Ribbon and material runs out at the same time (less waste!)

Easy-to-load cartridges with “No Jam” technology.

- Top-loading cartridge that snaps into place (you can't load it wrong!)
- Easy access to cartridge for quick changes
- Locking mechanism prevents labels from retracting into cartridge



Electrical, voice/datacom identification

Wire & cable marking for twisted pair data cables (UTP, FTP...), fibre optic cables, conductors, computer wires, electrical installation wires & cables, power & ground cables, energy cables...



Flags



Tags



Wrap-around labels



Self-lams

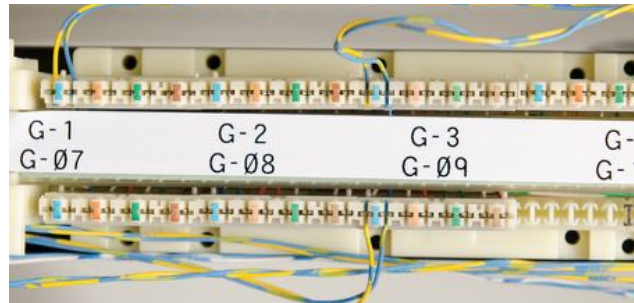


Sleeves

Component marking for patch panels, control panels, punch blocks, terminal blocks, breaker boxes, face-plates...



Punch block & patch panel labels



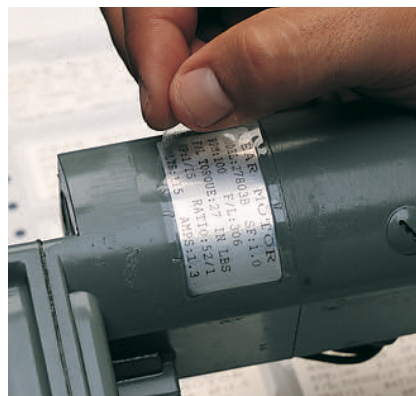
Terminal block labels

General & industrial identification

Asset & component marking to be used on all kind of surfaces (smooth, rough, textured, low energy...).



Rating & name plate labels



Overlaminata labels



Pre-printed labels

Facility & safety identification

Lean warehouse identification



Laboratory identification

Specimen tracking identification for sample tracking within histology labs: utilize barcode technology to prevent misdiagnosis.



Straws & rods



Conical & large tube labels

Specimen process marking supporting microscopic analysis of cells and tissues within pathology and clinical labs.



Centrifuge, eppendorf & PCR labels

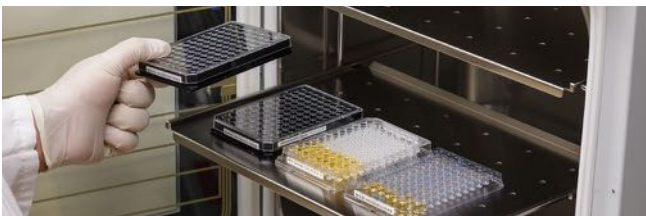


Slide labels



Tissue cassettes

Specimen storage identification supporting specimen collection and handling such as blood samples, cryo-samples etc.

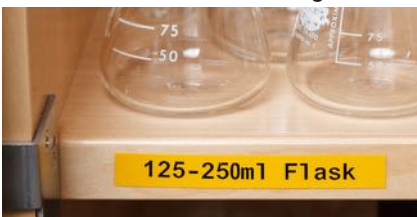


Well plate labels



Cryo labels

Lean lab identification for general supplies marking.



General lab equipment labels



Removable labels for glassware



Bottle tamper seal labels

Ever lost time figuring out where each wire goes?

Durable professional labels that remain legible and stay attached in harsh conditions are extremely important to keep power, network, voice and data cables and components organised and running effectively.

Professional identification on wires, cables and components enables you to:

- immediately recognise what needs checking during troubleshooting
- clearly mark parts for upcoming maintenance upgrades
- trace history, lifespan and supplier
- add safety warnings or precautions

Ask yourself how much time or money you lose while trying to trace an unidentified faulty cable, wire or component.

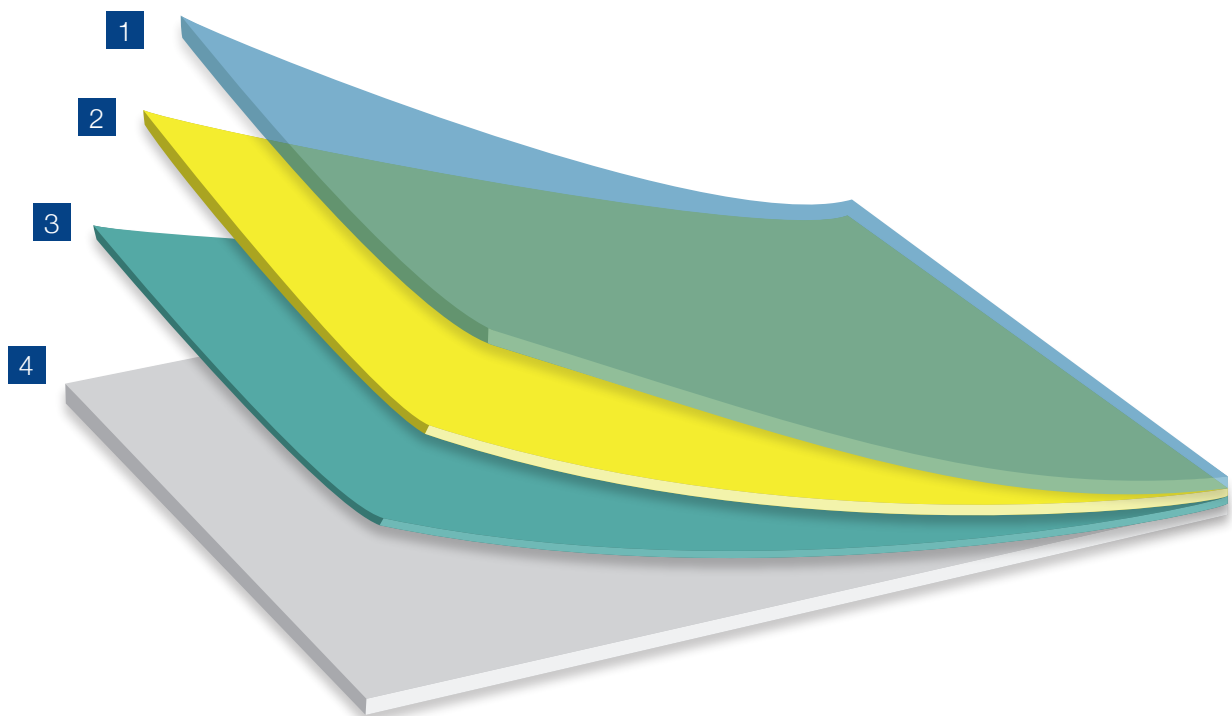
Ask yourself how fast pressure builds when machinery, production lines, servers and services are impacted.

This is when professional labelling pays off big time.



The combination of label liner, adhesive, substrate and topcoat provide a professional label's features, resistances, capabilities and durability.

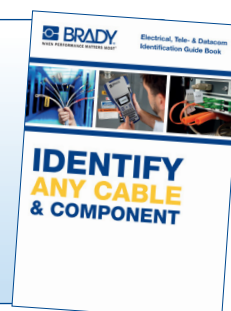
- 1 The topcoat gives the label its colour and finish, receives the print, and increases resistance against weathering, flames, chemicals or heat.
- 2 The substrate gives the label its form and provides tensile properties such as strength and flexibility and physical properties such as chemical and temperature resistance.
- 3 The adhesive attaches the label to a chosen surface type and ensures resistance against a set of environmental contexts.
- 4 The label liner is a very thin carrier that releases the self-adhesive label.



Which label suits your needs best?

Request your Electrical, Tele- & Datacom Identification guide book to help you choose the optimal Brady label material for your application at

www.bradyeurope.com/cableID.



BMP51 media offering

We continuously try to improve & extend our label material offering, therefore make sure to check for firmware upgrades regularly, in order to make sure you always have access to the newest materials.

| Material | |
|----------|-------------------------------|
| B-109 | Polyethylene Tag |
| B-145 | Polyethylene Tag |
| B-342 | Heat-shrink Polyolefin Sleeve |
| B-351 | Tamper-resistant Vinyl |
| B-403 | Paper |
| B-412 | Polypropylene Tag |
| B-422 | Polyester |
| B-425A | Polypropylene |
| B-427 | Self-laminating Vinyl |
| B-428 | Metallised Polyester |
| B-432 | Polyester |
| B-461 | Self-laminating Polyester |

| Material | |
|----------|-------------------------------|
| B-481 | StainerBondz™ Polyester |
| B-482 | Polyester |
| B-483 | Polyester |
| B-488 | Polyester |
| B-490 | Freezerbondz™ Polyester |
| B-492 | Freezerbondz™ Polyester |
| B-498 | Vinyl Cloth |
| B-499 | Nylon Cloth |
| B-584 | Reflective Tape |
| B-595 | Vinyl |
| B-7425 | Polypropylene |
| B-7641 | Heat-shrink Polyolefin Sleeve |

Compatible Media:

M-, MC-, MC1- Series Cartridges (All sizes)



38.1 mm height

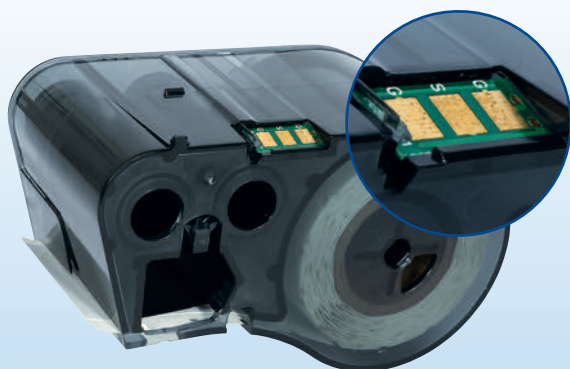


25.4 mm height



19.05 mm height

Smart-Cell Technology



With smart-cell technology built into label rolls and ribbons, the printers are able to automatically format the label and place objects so that there is no guess work on your part. If the label material & ribbon are not compatible, the screen will show an error message.

Variable Font Sizes

Font sizes range from 4 to 103 point. The maximum font size available depends on factors such as label size, number of characters, number of lines, as well as font sizes in other lines.

| Point Size | Print Sample |
|------------|--------------|
| 4 | ABC 12345 |
| 6 | ABC 12345 |
| 7 | ABC 12345 |
| 9 | ABC 12345 |
| 10 | ABC 12345 |
| 14 | ABC 12345 |
| 16 | ABC 12345 |
| 20 | ABC 12345 |
| 26 | ABC 12345 |
| 32 | ABC 12345 |
| 40 | ABC 12345 |
| 45 | ABC 1234 |
| 51 | ABC 123 |
| 55 | ABC 123 |
| 60 | ABC 123 |
| 65 | ABC 12 |
| 70 | ABC 12 |
| 76 | AB 12 |
| 102 | AB 12 |






Barcode Types



- Code 39 and Code 128
- Other barcodes supported in combination with LabelMark or Brady Workstation

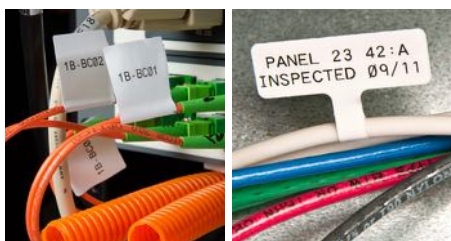
Symbol Library

- Standard electrical and datacom symbols
- Over 450 built in graphics
- Built in time/date stamp

| | | |
|---|--|--|
|  Arrows |  Datacom |  Electrical |
|  Exit |  Fire |  First aid |
|  CLP/GHS |  Home electrical |  International |
|  Mandatory |  Packaging |  Prohibition |
|  Public info |  Warning |  WHMIS |

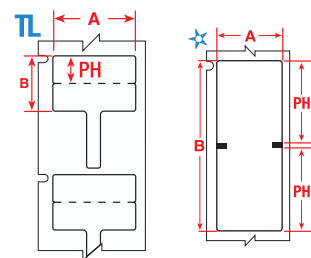
...and many more

Wire & cable marking



Cable flags

Pre-formatted with two printable areas, allowing label to be easily folded around wires to create a two-sided, printed flag. Information is still legible on smaller diameter wires and the flag permits you to handle and view labels without touching the wires.

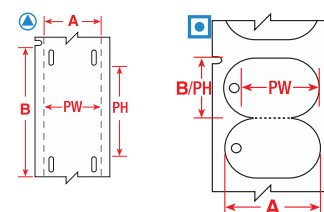


| Diagram | Order Reference | Colour | Label Width A (mm) | Label Height B (mm) | Printable Area Height PH (mm) | Labels per Roll | Additional Features | Printer Compatibility |
|----------------------|-----------------|----------------|--------------------|---------------------|-------------------------------|-----------------|---------------------------------|-----------------------|
| B-425: Polypropylene | | | | | | | | |
| TL | MFT-01-425 | Black on White | 30.00 | 20.00 | 10.00 | 200 | Ideal for Fibre Optic Labelling | BMP51; BMP53 |
| B-499: Nylon Cloth | | | | | | | | |
| ☆ | M-141-499 | Black on White | 25.40 | 57.15 | 25.40 | 90 | | BMP41; BMP51; BMP53 |
| ☆ | M-152-499 | Black on White | 38.10 | 31.75 | | 160 | Low profile; High adhesion | BMP51; BMP53 |



Tags for communications cables

Multi-purpose tag that can be used for a variety of applications including identification of multiconductor cables, inventory, equipment, lockout, safety warning repair and work-in-progress. Extremely tear resistant.



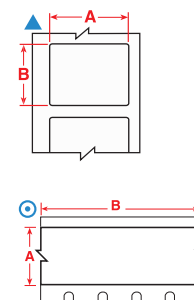
| Diagram | Order Reference | Colour | Label Width A (mm) | Label Height B (mm) | Printable Area Width PW (mm) | Printable Area Height PH (mm) | Labels per Roll | Additional Features | Printer Compatibility |
|-------------------------|-----------------|----------------|--------------------|---------------------|------------------------------|-------------------------------|-----------------|-----------------------|-----------------------|
| B-109: Polyethylene Tag | | | | | | | | | |
| ⊙ | M-12-109 | Black on White | 19.05 | 76.20 | 19.05 | 56.00 | 80 | Good cold-weather tag | BMP51; BMP53 |
| B-145: Polyethylene Tag | | | | | | | | | |
| ⊙ | M-111-145FR-GY | Black on Grey | 30.63 | 19.25 | 20.62 | 19.25 | 65 | Flame Retardant | BMP51; BMP53 |



Wrap around wire & cable markers

Durable vinyl cloth wrap around wire and cable markers made with an adhesive that allows the markers to be removed cleanly and reapplied if necessary.

| Diagram | Order Reference | Colour | Label Width A (mm) | Label Height B (mm) | Label Length B (m) | Max. Wire Diameter (mm) | Labels per Roll | Printer Compatibility |
|--------------------|-----------------|----------------|--------------------|---------------------|--------------------|-------------------------|-----------------|-----------------------|
| B-498: Vinyl Cloth | | | | | | | | |
| ▲ | M-7-498 | Black on White | 12.70 | 12.70 | - | 2.80 | 240 | BMP41; BMP51; BMP53 |
| ▲ | M-11-498 | Black on White | 19.05 | 12.70 | - | 4.00 | 220 | BMP41; BMP51; BMP53 |
| ▲ | M-48-498 | Black on White | 25.40 | 19.05 | - | 5.10 | 180 | BMP41; BMP51; BMP53 |
| ▲ | M-49-498 | Black on White | 25.40 | 25.40 | - | 5.10 | 160 | BMP41; BMP51; BMP53 |
| ▲ | M-91-498 | Black on White | 25.40 | 38.10 | - | 7.10 | 120 | BMP41; BMP51; BMP53 |
| ▲ | M-131-498 | Black on White | 12.70 | 25.40 | - | 5.10 | 180 | BMP41; BMP51; BMP53 |
| B-499: Nylon Cloth | | | | | | | | |
| ⊙ | MC-375-499 | Black on White | 9.53 | - | 4.88 | - | 1 | BMP41; BMP51; BMP53 |
| ⊙ | MC-500-499 | Black on White | 12.70 | - | 4.88 | - | 1 | BMP41; BMP51; BMP53 |
| ⊙ | MC-1000-499 | Black on White | 25.40 | - | 4.88 | - | 1 | BMP51; BMP53 |
| ⊙ | MC-750-499 | Black on White | 19.05 | - | 4.88 | - | 1 | BMP41; BMP51; BMP53 |



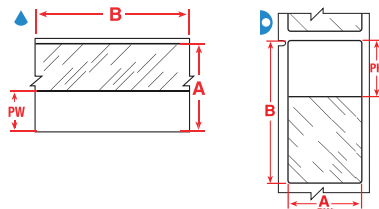
Wire & cable marking

i How to read an order reference: example M-31-427-YL

M - **31** - **427** - **YL**
M: Die cut label Label size code Brady material Optional colour
MC: Continuous label number (B-number)

Self-laminating cable markers

Features a clear, non-printable area that wraps around the cable and serves as an overlamine to the printed text. Offers superior resistance to abrasion, dirt, oils, solvents, and water.



| Diagram | Order Reference | Colour | Label Width A (mm) | Label Height B (mm) | Label Length B (m) | Printable Area Width PW (mm) | Printable Area Height PH (mm) | Labels per Roll | Max. Wire Diameter (mm) | For Data Cables Sized to Fit | Printer Compatibility |
|-------------------------------------|-----------------|-----------------------------|--------------------|---------------------|--------------------|------------------------------|-------------------------------|-----------------|-------------------------|--|-----------------------|
| B-427: Self-laminating Vinyl | | | | | | | | | | | |
| | M-89-427 | Black on White/Transparent | 12.70 | 38.10 | | 12.70 | 12.70 | 180 | 8.10 mm | CAT 6; 4 pair UTP Copper | BMP41; BMP51; BMP53 |
| | M-11-427 | Black on White/Transparent | 12.70 | 19.05 | | 12.70 | 9.53 | 360 | 3.00 mm | | BMP41; BMP51; BMP53 |
| | M-102-427 | Black on White/Transparent | 12.70 | 31.75 | | 12.70 | 9.53 | 200 | 7.10 mm | CAT 6; 4 pair UTP Copper | BMP41; BMP51; BMP53 |
| | M-90-427 | Black on White/Transparent | 19.05 | 38.10 | | 19.05 | 12.70 | 180 | 8.10 mm | CAT 6; 4 pair UTP Copper | BMP41; BMP51; BMP53 |
| | M-91-427 | Black on White/Transparent | 25.40 | 38.10 | | 25.40 | 12.70 | 180 | 8.10 mm | CAT 6; 4 pair UTP Copper | BMP41; BMP51; BMP53 |
| | M-143-427 | Black on White/Transparent | 25.40 | 31.75 | | 25.40 | 12.70 | 200 | 6.10 mm | CAT 6; 4 pair UTP Copper | BMP41; BMP51; BMP53 |
| | M-91-427-YL | Black on Yellow/Transparent | 25.40 | 38.10 | | 25.40 | 12.70 | 180 | 8.10 mm | CAT 6; 4 pair UTP Copper | BMP41; BMP51; BMP53 |
| | M-51-427 | Black on White/Transparent | 25.40 | 63.50 | | 25.40 | 19.05 | 110 | 14.20 mm | 25 pair Copper; 4-12 pair Fibre; Coaxial | BMP41; BMP51; BMP53 |
| | M-49-427 | Black on White/Transparent | 25.40 | 25.40 | | 25.40 | 9.53 | 260 | 5.10 mm | 2 Pair Fibre/Coaxial; Single/Multi-Mode | BMP41; BMP51; BMP53 |
| | M-51-427-YL | Black on Yellow/Transparent | 25.40 | 63.50 | | 25.40 | 19.05 | 110 | 14.20 mm | 25 pair Copper; 4-12 pair Fibre; Coaxial | BMP41; BMP51; BMP53 |
| | M-53-427 | Black on White/Transparent | 25.40 | 101.60 | | 25.40 | 25.40 | 70 | 24.30 mm | 50 Pair Copper; 24 Pair Fibre; Backbone | BMP41; BMP51; BMP53 |
| | M-53-427-YL | Black on Yellow/Transparent | 25.40 | 101.60 | | 25.40 | 25.40 | 70 | 24.30 mm | 50 Pair Copper; 24 Pair Fibre; Backbone | BMP41; BMP51; BMP53 |
| | M-115-427 | Black on White/Transparent | 38.10 | 31.75 | | 38.10 | 12.70 | 200 | 6.10 mm | CAT 6; 4 pair UTP Copper | BMP51; BMP53 |
| | M-32-427 | Black on White/Transparent | 38.10 | 38.10 | | 38.10 | 12.70 | 180 | 8.10 mm | CAT 6; 4 pair UTP Copper | BMP51; BMP53 |
| | M-116-427 | Black on White/Transparent | 38.10 | 63.50 | | 38.10 | 19.05 | 80 | 14.20 mm | 25 pair Copper; 4-12 pair Fibre; Coaxial | BMP51; BMP53 |
| | M-33-427 | Black on White/Transparent | 38.10 | 101.60 | | 38.10 | 25.40 | 70 | 24.30 mm | 50 Pair Copper; 24 Pair Fibre; Backbone | BMP51; BMP53 |
| | M-34-427 | Black on White/Transparent | 38.10 | 152.40 | | 38.10 | 38.10 | 40 | 36.40 mm | 100 Pair Copper; 36 Pair Fibre; Backbone | BMP51; BMP53 |
| | MC-750-427 | Black on White/Transparent | 19.05 | | 7.62 | 9.53 | | 1 | 3.00 mm | CAT 6; 4 pair UTP Copper | BMP41; BMP51; BMP53 |
| | MC-1000-427 | Black on White/Transparent | 25.40 | | 7.62 | 9.53 | | 1 | 5.10 mm | CAT 6; 4 pair UTP Copper | BMP51; BMP53 |
| | MC-1500-427 | Black on White/Transparent | 38.10 | | 7.62 | 12.70 | | 1 | 8.10 mm | CAT 6; 4 pair UTP Copper | BMP51; BMP53 |

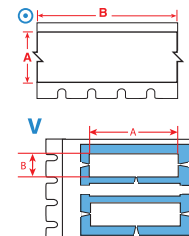
Wire & cable marking



PermaSleeve PS wire marking sleeves

These heat-shrink sleeves are the ultimate in marker durability, permanence and aesthetic appearance. Fast shrink rate saves time and costs during installation. Available as individual die-cut markers or continuous cut-to-length tubing.

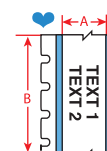
| Diagram | Order Reference | Colour | Label Width A (mm) | Label Height B (mm) | Label Length B (m) | Min. Wire Diameter (mm) | Max. Wire Diameter (mm) | Labels per Roll | Printer Compatibility |
|--------------------------------------|-----------------|-----------------|--------------------|---------------------|--------------------|-------------------------|-------------------------|-----------------|-----------------------|
| B-342: Heat-shrink Polyolefin Sleeve | | | | | | | | | |
| V | M-187-075-342 | Black on White | 19.05 | 8.50 | — | 1.57 mm | 3.81 mm | 80 | BMP41; BMP51; BMP53 |
| V | M-250-075-342 | Black on White | 19.05 | 11.15 | — | 2.39 mm | 5.46 mm | 80 | BMP41; BMP51; BMP53 |
| V | M-125-075-342 | Black on White | 19.05 | 6.00 | — | 1.17 mm | 2.79 mm | 80 | BMP41; BMP51; BMP53 |
| V | M-375-075-342 | Black on White | 19.05 | 16.40 | — | 3.18 mm | 8.13 mm | 80 | BMP41; BMP51; BMP53 |
| V | M-125-1-342 | Black on White | 25.78 | 6.00 | — | 1.17 mm | 2.79 mm | 80 | BMP51; BMP53 |
| V | M-187-1-342 | Black on White | 25.78 | 8.50 | — | 1.57 mm | 3.81 mm | 80 | BMP51; BMP53 |
| V | M-250-1-342 | Black on White | 25.78 | 11.15 | — | 2.39 mm | 5.46 mm | 80 | BMP51; BMP53 |
| V | M-375-1-342 | Black on White | 25.78 | 16.40 | — | 3.18 mm | 8.13 mm | 80 | BMP51; BMP53 |
| ⊙ | MC-187-342 | Black on White | | 8.50 | 2.13 | 1.57 mm | 3.81 mm | 1 | BMP41; BMP51; BMP53 |
| ⊙ | MC-125-342 | Black on White | | 6.00 | 2.13 | 1.17 mm | 2.79 mm | 1 | BMP41; BMP51; BMP53 |
| ⊙ | MC-250-342 | Black on White | | 11.15 | 2.13 | 2.39 mm | 5.46 mm | 1 | BMP41; BMP51; BMP53 |
| ⊙ | MC1-375-342 | Black on White | | 16.40 | 2.13 | 3.18 mm | 8.13 mm | 1 | BMP41; BMP51; BMP53 |
| ⊙ | MC-187-342-YL | Black on Yellow | | 8.50 | 2.13 | 1.57 mm | 3.81 mm | 1 | BMP41; BMP51; BMP53 |
| ⊙ | MC-125-342-YL | Black on Yellow | | 6.00 | 2.13 | 1.17 mm | 2.79 mm | 1 | BMP41; BMP51; BMP53 |
| ⊙ | MC-250-342-YL | Black on Yellow | | 11.15 | 2.13 | 2.39 mm | 5.46 mm | 1 | BMP41; BMP51; BMP53 |



PermaSleeve heat-shrink sleeve markers

These heat-shrink sleeves are the ultimate in marker identification, protection, durability and aesthetic appearance. Fast shrink rate saves time and costs during installation. Low smoke zero halogen wire marking sleeves (B-7641) offer outstanding fire safety properties and minimal smoke emission.

| Diagram | Order Reference | Colour | Label Width A (mm) | Label Length B (m) | Min. Wire Diameter (mm) | Max. Wire Diameter (mm) | Labels per Roll | Printer Compatibility |
|---------------------------------------|-----------------|-----------------|--------------------|--------------------|-------------------------|-------------------------|-----------------|-----------------------|
| B-7641: Heat-shrink Polyolefin Sleeve | | | | | | | | |
| ♥ | MC1-125-7641 | Black on White | 6.00 | 2.13 | 1.17 mm | 2.79 mm | 1 | BMP51; BMP53 |
| ♥ | MC1-125-7641-YL | Black on Yellow | 6.00 | 2.13 | 1.17 mm | 2.79 mm | 1 | BMP51; BMP53 |
| ♥ | MC1-187-7641 | Black on White | 8.50 | 2.13 | 1.57 mm | 3.81 mm | 1 | BMP51; BMP53 |
| ♥ | MC1-187-7641-YL | Black on Yellow | 8.50 | 2.13 | 1.57 mm | 3.81 mm | 1 | BMP51; BMP53 |
| ♥ | MC1-250-7641 | Black on White | 11.15 | 2.13 | 2.39 mm | 5.46 mm | 1 | BMP51; BMP53 |
| ♥ | MC1-250-7641-YL | Black on Yellow | 11.15 | 2.13 | 2.39 mm | 5.46 mm | 1 | BMP51; BMP53 |
| ♥ | MC1-375-7641 | Black on White | 16.40 | 2.13 | 3.18 mm | 8.13 mm | 1 | BMP51; BMP53 |
| ♥ | MC1-375-7641-YL | Black on Yellow | 16.40 | 2.13 | 3.18 mm | 8.13 mm | 1 | BMP51; BMP53 |



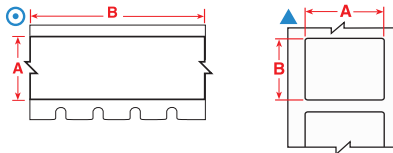
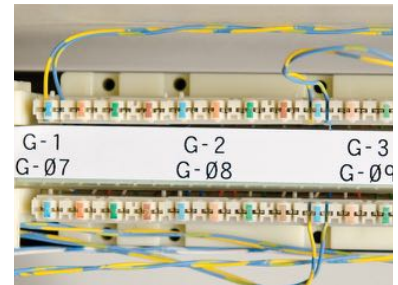
Did you know?

The BMP51 Label Maker has a built-in label retention feature, that grips the label until you need it. Paired with the magnet accessory, this is the ultimate answer to your “on the job” labelling requirements.

Component marking

Punch block & patch panel labels

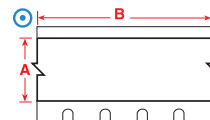
Make fully-formatted punch block strips or labels in one easy process. Labelling software allows you to easily create serialised punch block labels with or without grid lines to fit your equipment.



| Diagram | Order Reference | Colour | Label Width A (mm) | Label Height B (mm) | Label Length B (m) | Labels per Roll | Additional Features | Printer Compatibility |
|---------------------------------|-----------------|----------------|--------------------|---------------------|--------------------|-----------------|--|-----------------------|
| B-412: Polypropylene Tag | | | | | | | | |
| ⊙ | MC-375-412 | Black on White | 9.53 | | 6.10 | 1 | Non-Adhesive Slide-in Strips | BMP41; BMP51; BMP53 |
| ⊙ | MC-475-412 | Black on White | 12.07 | | 6.10 | 1 | Non-Adhesive Slide-in Strips | BMP41; BMP51; BMP53 |
| ⊙ | MC-625-412 | Black on White | 15.88 | | 6.10 | 1 | Non-Adhesive Slide-in Strips | BMP41; BMP51; BMP53 |
| B-422: Polyester | | | | | | | | |
| ▲ | M-7-422 | Black on White | 12.70 | 12.70 | | 280 | Port Labels | BMP41; BMP51; BMP53 |
| ⊙ | MC-375-422 | Black on White | 9.53 | | 7.62 | 1 | Adhesive Stick-on Strips: Outlet, Patch Panel, Cont. Tape, Cut to Size | BMP41; BMP51; BMP53 |
| ⊙ | MC-475-422 | Black on White | 12.07 | | 7.62 | 1 | Adhesive Stick-on Strips: Outlet, Patch Panel, Cont. Tape, Cut to Size | BMP41; BMP51; BMP53 |
| ⊙ | MC-625-422 | Black on White | 15.88 | | 7.62 | 1 | Adhesive Stick-on Strips: Outlet, Patch Panel, Cont. Tape, Cut to Size | BMP41; BMP51; BMP53 |

Terminal block markers

Specially-designed narrow-width markers. Labelling Software can auto-serialise these labels to save you time.



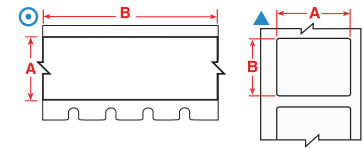
| Diagram | Order Reference | Colour | Label Width A (mm) | Label Length B (m) | Labels per Roll | Printer Compatibility |
|---------------------------|-----------------|----------------|--------------------|--------------------|-----------------|-----------------------|
| B-498: Vinyl Cloth | | | | | | |
| ⊙ | MC-240-498 | Black on White | 6.10 | 4.88 | 1 | BMP41; BMP51; BMP53 |
| ⊙ | MC-318-498 | Black on White | 8.08 | 4.88 | 1 | BMP41; BMP51; BMP53 |
| ⊙ | MC-375-498 | Black on White | 9.53 | 6.10 | 1 | BMP41; BMP51; BMP53 |

Component Marking



General datacom identification

Durable materials with permanent adhesive. Available in a variety of sizes and colours for marking racks, bays, frames, slots, and other voice/data hardware.

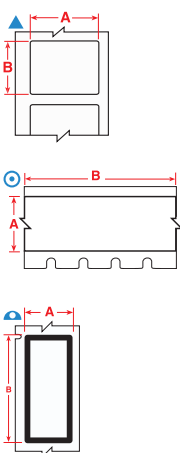


| Diagram | Order Reference | Colour | Label Width A (mm) | Label Height B (mm) | Label Length B (m) | Labels per Roll | Additional Features | Printer Compatibility |
|-------------------------|--------------------|-----------------|--------------------|---------------------|--------------------|-----------------|--|-----------------------|
| B-422: Polyester | | | | | | | | |
| ▲ | M-89-422 | Black on White | 12.70 | 38.10 | | 180 | Stick-on Individual Labels | BMP41; BMP51; BMP53 |
| ▲ | M-7-422 | Black on White | 12.70 | 12.70 | | 280 | Port Labels | BMP41; BMP51; BMP53 |
| ⊙ | MC1-1000-422 | Black on White | 25.40 | | 7.62 | 1 | Adhesive Stick-on Strips: Outlet, Patch Panel, Cont. Tape, Cut to Size | BMP41; BMP51; BMP53 |
| ▲ | M-49-422 | Black on White | 25.40 | 25.40 | | 260 | Adhesive Stick-on individual labels | BMP41; BMP51; BMP53 |
| B-483: Polyester | | | | | | | | |
| ▲ | M-61-483 | Black on White | 12.70 | 50.80 | | 80 | Ultra-aggressive adhesive; Designed for powder coated surfaces | BMP41; BMP51; BMP53 |
| ▲ | M-60-483 | Black on White | 25.40 | 50.80 | | 140 | Ultra-aggressive adhesive; Designed for powder coated surfaces | BMP41; BMP51; BMP53 |
| ▲ | M-47-483 | Black on White | 25.40 | 12.70 | | 480 | Ultra-aggressive adhesive; Designed for powder coated surfaces | BMP41; BMP51; BMP53 |
| B-595: Vinyl | | | | | | | | |
| ⊙ | MC-375-595-WT-BK | Black on White | 9.53 | | 7.62 | 1 | Adhesive Stick on Strips, Cut to Size | BMP41; BMP51; BMP53 |
| ⊙ | MC-375-595-YL-BK | Black on Yellow | 9.53 | | 7.62 | 1 | Adhesive Stick on Strips, Cut to Size | BMP41; BMP51; BMP53 |
| ⊙ | MC-500-595-YL-BK | Black on Yellow | 12.70 | | 7.62 | 1 | Adhesive Stick on Strips, Cut to Size | BMP41; BMP51; BMP53 |
| ⊙ | MC-750-595-YL-BK | Black on Yellow | 19.05 | | 7.62 | 1 | Adhesive Stick on Strips, Cut to Size | BMP41; BMP51; BMP53 |
| ⊙ | MC1-1000-595-YL-BK | Black on Yellow | 25.40 | | 7.62 | 1 | Adhesive Stick on Strips, Cut to Size | BMP41; BMP51; BMP53 |
| ⊙ | MC-1500-595-YL-BK | Black on Yellow | 38.10 | | 7.62 | 1 | Adhesive Stick on Strips, Cut to Size | BMP51; BMP53 |
| ⊙ | MC-500-595-CL-WT | White on Clear | 12.70 | | 6.10 | 1 | Adhesive Stick on Strips, Cut to Size | BMP41; BMP51; BMP53 |
| ⊙ | MC-750-595-CL-WT | White on Clear | 19.05 | | 6.10 | 1 | Adhesive Stick on Strips, Cut to Size | BMP41; BMP51; BMP53 |
| ⊙ | MC1-1000-595-CL-WT | White on Clear | 25.40 | | 6.10 | 1 | Adhesive Stick on Strips, Cut to Size | BMP41; BMP51; BMP53 |
| ⊙ | MC-1500-595-CL-WT | White on Clear | 38.10 | | 6.10 | 1 | Adhesive Stick on Strips, Cut to Size | BMP51; BMP53 |
| ⊙ | MC-375-595-RD-WT | White on Red | 9.53 | | 7.62 | 1 | Adhesive Stick on Strips, Cut to Size | BMP41; BMP51; BMP53 |



General electrical component marking

Various sizes, colours and label types for marking relays, solenoids, switches, drive motors, and other components.

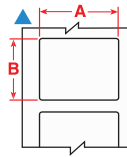
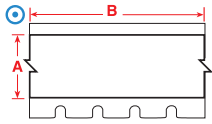


| Diagram | Order Reference | Colour | Label Width A (mm) | Label Height B (mm) | Label Length B (m) | Labels per Roll | Printer Compatibility |
|------------------------------------|--------------------|-----------------|--------------------|---------------------|--------------------|-----------------|-----------------------|
| B-422: Polyester | | | | | | | |
| ▲ | M-89-422 | Black on White | 12.70 | 38.10 | | 180 | BMP41; BMP51; BMP53 |
| ▲ | M-7-422 | Black on White | 12.70 | 12.70 | | 280 | BMP41; BMP51; BMP53 |
| ▲ | M-49-422 | Black on White | 25.40 | 25.40 | | 260 | BMP41; BMP51; BMP53 |
| ⊙ | MC1-1000-422 | Black on White | 25.40 | | 7.62 | 1 | BMP41; BMP51; BMP53 |
| B-428: Metallised Polyester | | | | | | | |
| ▲ | M-92-428-BB | Black on Silver | 12.70 | 33.02 | | 239 | BMP41; BMP51; BMP53 |
| ▲ | M-47-428 | Black on Silver | 25.40 | 12.70 | | 480 | BMP41; BMP51; BMP53 |
| ▲ | M-60-428 | Black on Silver | 25.40 | 50.80 | | 140 | BMP41; BMP51; BMP53 |
| ▲ | M-30-428 | Black on Silver | 38.1 | 19.05 | | 260 | BMP51; BMP53 |
| ▲ | M-29-428 | Black on Silver | 38.10 | 12.70 | | 360 | BMP51; BMP53 |
| B-483: Polyester | | | | | | | |
| ▲ | M-61-483 | Black on White | 12.70 | 50.80 | | 80 | BMP41; BMP51; BMP53 |
| ▲ | M-60-483 | Black on White | 25.40 | 50.80 | | 140 | BMP41; BMP51; BMP53 |
| B-499: Nylon Cloth | | | | | | | |
| ▲ | M-11-499 | Black on White | 19.05 | 12.70 | | 220 | BMP41; BMP51; BMP53 |
| ▲ | M-84-499 | Black on White | 22.86 | 12.70 | | 200 | BMP51; BMP53 |
| ▲ | M-128-499 | Black on White | 25.40 | 48.26 | | 100 | BMP41; BMP51; BMP53 |
| ▲ | M-132-499 | Black on White | 38.10 | 31.75 | | 160 | BMP51; BMP53 |
| B-595: Vinyl | | | | | | | |
| ⊙ | MC-375-595-RD-WT | White on Red | 9.53 | | 7.62 | 1 | BMP41; BMP51; BMP53 |
| ⊙ | MC-500-595-OR-BK | Black on Orange | 12.70 | | 7.62 | 1 | BMP41; BMP51; BMP53 |
| ⊙ | MC-750-595-OR-BK | Black on Orange | 19.05 | | 7.62 | 1 | BMP41; BMP51; BMP53 |
| ⊙ | MC1-1000-595-OR-BK | Black on Orange | 25.40 | | 7.62 | 1 | BMP41; BMP51; BMP53 |
| ⊙ | MC-1500-595-OR-BK | Black on Orange | 38.10 | | 7.62 | 1 | BMP51; BMP53 |

Component marking

Faceplate & outlet labels

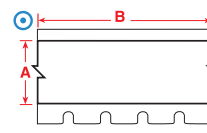
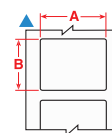
Label your ports, jacks, and outlets with a variety of adhesive labels or slide-in strips.



| Diagram | Order Reference | Colour | Label Width A (mm) | Label Height B (mm) | Label Length B (m) | Labels per Roll | Additional Features | Printer Compatibility |
|---------------------------------|-----------------|----------------|--------------------|---------------------|--------------------|-----------------|--|-----------------------|
| B-412: Polypropylene Tag | | | | | | | | |
| ⊙ | MC-475-412 | Black on White | 12.07 | | 6.10 | 1 | Non-Adhesive Slide-in Strips | BMP41; BMP51; BMP53 |
| B-422: Polyester | | | | | | | | |
| ▲ | M-89-422 | Black on White | 12.70 | 38.10 | | 180 | Stick-on Individual Labels | BMP41; BMP51; BMP53 |
| ▲ | M-7-422 | Black on White | 12.70 | 12.70 | | 280 | Port Labels | BMP41; BMP51; BMP53 |
| ⊙ | MC-375-422 | Black on White | 9.53 | | 7.62 | 1 | Adhesive Stick-on Strips: Outlet, Patch Panel, Cont. Tape, Cut to Size | BMP41; BMP51; BMP53 |
| ⊙ | MC-475-422 | Black on White | 12.07 | | 7.62 | 1 | Adhesive Stick-on Strips: Outlet, Patch Panel, Cont. Tape, Cut to Size | BMP41; BMP51; BMP53 |
| B-483: Polyester | | | | | | | | |
| ▲ | M-61-483 | Black on White | 12.70 | 50.80 | | 80 | Ultra-aggressive adhesive; Designed for powder coated surfaces | BMP41; BMP51; BMP53 |

Control panel and electrical panel labels

Long-lasting, durable materials to quickly identify control and electrical panels.



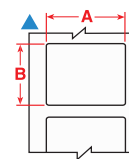
| Diagram | Order Reference | Colour | Label Width A (mm) | Label Height B (mm) | Label Length B (m) | Labels per Roll | Printer Compatibility |
|------------------------------------|-------------------|-----------------|--------------------|---------------------|--------------------|-----------------|-----------------------|
| B-428: Metallised Polyester | | | | | | | |
| ▲ | M-47-428 | Black on Silver | 25.40 | 12.70 | | 480 | BMP41; BMP51; BMP53 |
| ▲ | M-60-428 | Black on Silver | 25.40 | 50.80 | | 140 | BMP41; BMP51; BMP53 |
| ▲ | M-30-428 | Black on Silver | 38.1 | 19.05 | | 260 | BMP51; BMP53 |
| ▲ | M-29-428 | Black on Silver | 38.10 | 12.70 | | 360 | BMP51; BMP53 |
| B-595: Vinyl | | | | | | | |
| ⊙ | MC-1500-595-CL-BK | Black on Clear | 38.10 | | 6.10 | 1 | BMP51; BMP53 |
| ⊙ | MC-1500-595-CL-WT | White on Clear | 38.10 | | 6.10 | 1 | BMP51; BMP53 |
| ⊙ | MC-375-595-RD-WT | White on Red | 9.53 | | 7.62 | 1 | BMP41; BMP51; BMP53 |
| ⊙ | MC-1500-595-OR-BK | Black on Orange | 38.10 | | 7.62 | 1 | BMP51; BMP53 |
| ⊙ | MC-1500-595-WT-BK | Black on White | 38.10 | | 7.62 | 1 | BMP51; BMP53 |
| ⊙ | MC-1500-595-YL-BK | Black on Yellow | 38.10 | | 7.62 | 1 | BMP51; BMP53 |
| ⊙ | MC-1500-595-WT-RD | Red on White | 38.10 | | 7.62 | 1 | BMP51; BMP53 |
| ⊙ | MC-1500-595-BK-WT | White on Black | 38.10 | | 7.62 | 1 | BMP51; BMP53 |
| ⊙ | MC-1500-595-BL-WT | White on Blue | 38.10 | | 7.62 | 1 | BMP51; BMP53 |
| ⊙ | MC-1500-595-GN-WT | White on Green | 38.10 | | 7.62 | 1 | BMP51; BMP53 |
| ⊙ | MC-1500-595-RD-WT | White on Red | 38.10 | | 7.62 | 1 | BMP51; BMP53 |

Asset & component marking



Tamper-resistant labels

Destructible vinyl material prohibits one piece removal of label to indicate if the label has been tampered with.

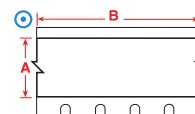


| Diagram | Order Reference | Colour | Label Width A (mm) | Label Height B (mm) | Labels per Roll | Printer Compatibility |
|--------------------------------------|-----------------|----------------|--------------------|---------------------|-----------------|-----------------------|
| B-351: Tamper-resistant Vinyl | | | | | | |
| ▲ | M-17-351 | Black on White | 25.40 | 12.70 | 360 | BMP51; BMP53 |
| ▲ | M-20-351 | Black on White | 25.40 | 50.80 | 160 | BMP51; BMP53 |



Highly reflective identification

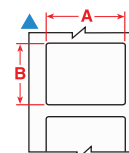
Ideal for reading labels in low light conditions.



| Diagram | Order Reference | Colour | Label Width A (mm) | Label Length B (m) | Labels per Roll | Printer Compatibility |
|-------------------------------|-----------------|-----------------|--------------------|--------------------|-----------------|-----------------------|
| B-584: Reflective Tape | | | | | | |
| ⊙ | MC-500-584 | Black on White | 12.70 | 6.10 | 1 | BMP41; BMP51; BMP53 |
| ⊙ | MC-750-584 | Black on White | 19.05 | 6.10 | 1 | BMP41; BMP51; BMP53 |
| ⊙ | MC-1000-584 | Black on White | 25.40 | 6.10 | 1 | BMP51; BMP53 |
| ⊙ | MC-1500-584 | Black on White | 38.10 | 6.10 | 1 | BMP51; BMP53 |
| ⊙ | MC-500-584-YL | Black on Yellow | 12.70 | 6.10 | 1 | BMP41; BMP51; BMP53 |
| ⊙ | MC-750-584-YL | Black on Yellow | 19.05 | 6.10 | 1 | BMP41; BMP51; BMP53 |
| ⊙ | MC-1000-584-YL | Black on Yellow | 25.40 | 6.10 | 1 | BMP51; BMP53 |
| ⊙ | MC-1500-584-YL | Black on Yellow | 38.10 | 6.10 | 1 | BMP51; BMP53 |



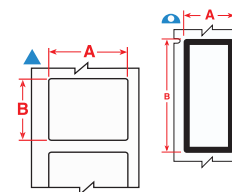
Name & rating plate labels for rough surfaces



| Diagram | Order Reference | Colour | Label Width A (mm) | Label Height B (mm) | Labels per Roll | Printer Compatibility |
|-------------------------|-----------------|----------------|--------------------|---------------------|-----------------|-----------------------|
| B-483: Polyester | | | | | | |
| ▲ | M-61-483 | Black on White | 12.70 | 50.80 | 80 | BMP41; BMP51; BMP53 |
| ▲ | M-60-483 | Black on White | 25.40 | 50.80 | 140 | BMP41; BMP51; BMP53 |
| ▲ | M-47-483 | Black on White | 25.40 | 12.70 | 480 | BMP41; BMP51; BMP53 |



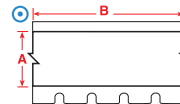
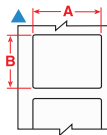
Name & rating plate labels for smooth, high surface energy surfaces



| Diagram | Order Reference | Colour | Label Width A (mm) | Label Height B (mm) | Labels per Roll | Printer Compatibility |
|------------------------------------|-----------------|-----------------|--------------------|---------------------|-----------------|-----------------------|
| B-428: Metallised Polyester | | | | | | |
| ▲ | M-92-428-BB | Black on Silver | 12.70 | 33.02 | 239 | BMP41; BMP51; BMP53 |
| ▲ | M-47-428 | Black on Silver | 25.40 | 12.70 | 480 | BMP41; BMP51; BMP53 |
| ▲ | M-60-428 | Black on Silver | 25.40 | 50.80 | 140 | BMP41; BMP51; BMP53 |
| ▲ | M-30-428 | Black on Silver | 38.1 | 19.05 | 260 | BMP51; BMP53 |
| ▲ | M-29-428 | Black on Silver | 38.10 | 12.70 | 360 | BMP51; BMP53 |

Asset & Component Marking

Name & rating plate labels for smooth, low surface energy & textured surfaces



| Order Diagram Reference | Colour | Label Width A (mm) | Label Length B (m) | Label Height B (mm) | Labels per Roll | Printer Compatibility |
|---------------------------|-----------------|--------------------|--------------------|---------------------|-----------------|-----------------------|
| B-422: Polyester | | | | | | |
| MC-375-422 | Black on White | 9.53 | 7.62 | | 1 | BMP41; BMP51; BMP53 |
| MC-475-422 | Black on White | 12.07 | 7.62 | | 1 | BMP41; BMP51; BMP53 |
| M-89-422 | Black on White | 12.70 | | 38.10 | 180 | BMP41; BMP51; BMP53 |
| M-7-422 | Black on White | 12.70 | | 12.70 | 280 | BMP41; BMP51; BMP53 |
| MC-500-422 | Black on White | 12.70 | 7.62 | | 1 | BMP41; BMP51; BMP53 |
| MC-625-422 | Black on White | 15.88 | 7.62 | | 1 | BMP41; BMP51; BMP53 |
| M-90-422 | Black on White | 19.05 | | 38.10 | 180 | BMP41; BMP51; BMP53 |
| M-47-422 | Black on White | 25.40 | | 12.70 | 480 | BMP41; BMP51; BMP53 |
| MC1-1000-422 | Black on White | 25.40 | 7.62 | | 1 | BMP41; BMP51; BMP53 |
| M-49-422 | Black on White | 25.40 | | 25.40 | 260 | BMP41; BMP51; BMP53 |
| B-432: Polyester | | | | | | |
| M-17-432-CL-BK | Black on Clear | 25.40 | | 12.70 | 280 | BMP51; BMP53 |
| M-78-432-CL-BK | Black on Clear | 25.40 | | 48.26 | 100 | BMP51; BMP53 |
| B-499: Nylon Cloth | | | | | | |
| MC-375-499 | Black on White | 9.53 | 4.88 | | 1 | BMP41; BMP51; BMP53 |
| MC-500-499 | Black on White | 12.70 | 4.88 | | 1 | BMP41; BMP51; BMP53 |
| M-11-499 | Black on White | 19.05 | | 12.70 | 220 | BMP41; BMP51; BMP53 |
| MC-750-499 | Black on White | 19.05 | 4.88 | | 1 | BMP41; BMP51; BMP53 |
| M-84-499 | Black on White | 22.86 | | 12.70 | 200 | BMP51; BMP53 |
| MC-1000-499 | Black on White | 25.40 | 4.88 | | 1 | BMP51; BMP53 |
| M-132-499 | Black on White | 38.10 | | 31.75 | 160 | BMP51; BMP53 |
| B-595: Vinyl | | | | | | |
| MC-500-595-CL-BK | Black on Clear | 12.70 | 6.10 | | 1 | BMP41; BMP51; BMP53 |
| MC-750-595-CL-BK | Black on Clear | 19.05 | 6.10 | | 1 | BMP41; BMP51; BMP53 |
| MC1-1000-595-CL-BK | Black on Clear | 25.40 | 6.10 | | 1 | BMP41; BMP51; BMP53 |
| MC-1500-595-CL-BK | Black on Clear | 38.10 | 6.10 | | 1 | BMP51; BMP53 |
| MC-500-595-OR-BK | Black on Orange | 12.70 | 7.62 | | 1 | BMP41; BMP51; BMP53 |
| MC-750-595-OR-BK | Black on Orange | 19.05 | 7.62 | | 1 | BMP41; BMP51; BMP53 |
| MC1-1000-595-OR-BK | Black on Orange | 25.40 | 7.62 | | 1 | BMP41; BMP51; BMP53 |
| MC-1500-595-OR-BK | Black on Orange | 38.10 | 7.62 | | 1 | BMP51; BMP53 |
| MC-375-595-WT-BK | Black on White | 9.53 | 7.62 | | 1 | BMP41; BMP51; BMP53 |
| MC-500-595-WT-BK | Black on White | 12.70 | 7.62 | | 1 | BMP41; BMP51; BMP53 |
| MC-750-595-WT-BK | Black on White | 19.05 | 7.62 | | 1 | BMP41; BMP51; BMP53 |
| MC1-1000-595-WT-BK | Black on White | 25.40 | 7.62 | | 1 | BMP41; BMP51; BMP53 |
| MC-1500-595-WT-BK | Black on White | 38.10 | 7.62 | | 1 | BMP51; BMP53 |
| MC-375-595-YL-BK | Black on Yellow | 9.53 | 7.62 | | 1 | BMP41; BMP51; BMP53 |
| MC-500-595-YL-BK | Black on Yellow | 12.70 | 7.62 | | 1 | BMP41; BMP51; BMP53 |

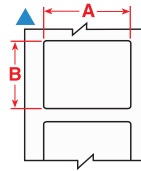
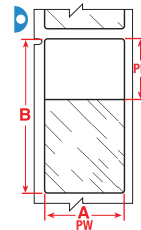
| Order Diagram Reference | Colour | Label Width A (mm) | Label Length B (m) | Label Height B (mm) | Labels per Roll | Printer Compatibility |
|-------------------------|-----------------|--------------------|--------------------|---------------------|-----------------|-----------------------|
| B-595: Vinyl | | | | | | |
| MC-750-595-YL-BK | Black on Yellow | 19.05 | 7.62 | | 1 | BMP41; BMP51; BMP53 |
| MC1-1000-595-YL-BK | Black on Yellow | 25.40 | 7.62 | | 1 | BMP41; BMP51; BMP53 |
| MC-1500-595-YL-BK | Black on Yellow | 38.10 | 7.62 | | 1 | BMP51; BMP53 |
| MC-500-595-WT-RD | Red on White | 12.70 | 7.62 | | 1 | BMP41; BMP51; BMP53 |
| MC-750-595-WT-RD | Red on White | 19.05 | 7.62 | | 1 | BMP41; BMP51; BMP53 |
| MC1-1000-595-WT-RD | Red on White | 25.40 | 7.62 | | 1 | BMP41; BMP51; BMP53 |
| MC-1500-595-WT-RD | Red on White | 38.10 | 7.62 | | 1 | BMP51; BMP53 |
| MC-500-595-BK-WT | White on Black | 12.70 | 7.62 | | 1 | BMP41; BMP51; BMP53 |
| MC-750-595-BK-WT | White on Black | 19.05 | 7.62 | | 1 | BMP41; BMP51; BMP53 |
| MC1-1000-595-BK-WT | White on Black | 25.40 | 7.62 | | 1 | BMP41; BMP51; BMP53 |
| MC-1500-595-BK-WT | White on Black | 38.10 | 7.62 | | 1 | BMP51; BMP53 |
| MC-500-595-BL-WT | White on Blue | 12.70 | 7.62 | | 1 | BMP41; BMP51; BMP53 |
| MC-750-595-BL-WT | White on Blue | 19.05 | 7.62 | | 1 | BMP41; BMP51; BMP53 |
| MC1-1000-595-BL-WT | White on Blue | 25.40 | 7.62 | | 1 | BMP41; BMP51; BMP53 |
| MC-1500-595-BL-WT | White on Blue | 38.10 | 7.62 | | 1 | BMP51; BMP53 |
| MC-500-595-CL-WT | White on Clear | 12.70 | 6.10 | | 1 | BMP41; BMP51; BMP53 |
| MC-750-595-CL-WT | White on Clear | 19.05 | 6.10 | | 1 | BMP41; BMP51; BMP53 |
| MC1-1000-595-CL-WT | White on Clear | 25.40 | 6.10 | | 1 | BMP41; BMP51; BMP53 |
| MC-1500-595-CL-WT | White on Clear | 38.10 | 6.10 | | 1 | BMP51; BMP53 |
| MC-500-595-GN-WT | White on Green | 12.70 | 7.62 | | 1 | BMP41; BMP51; BMP53 |
| MC-750-595-GN-WT | White on Green | 19.05 | 7.62 | | 1 | BMP41; BMP51; BMP53 |
| MC1-1000-595-GN-WT | White on Green | 25.40 | 7.62 | | 1 | BMP41; BMP51; BMP53 |
| MC-1500-595-GN-WT | White on Green | 38.10 | 7.62 | | 1 | BMP51; BMP53 |
| MC-375-595-RD-WT | White on Red | 9.53 | 7.62 | | 1 | BMP41; BMP51; BMP53 |
| MC-500-595-RD-WT | White on Red | 12.70 | 7.62 | | 1 | BMP41; BMP51; BMP53 |
| MC-750-595-RD-WT | White on Red | 19.05 | 7.62 | | 1 | BMP41; BMP51; BMP53 |
| MC1-1000-595-RD-WT | White on Red | 25.40 | 7.62 | | 1 | BMP41; BMP51; BMP53 |
| MC-1500-595-RD-WT | White on Red | 38.10 | 7.62 | | 1 | BMP51; BMP53 |

Specimen tracking identification



Straw and rod labels

- Brady offers a range of labels designed to fit the small surface area of straws and rods and will withstand long-term storage.



- F** Freezer environment
- N** Liquid nitrogen environment
- A** Autoclave environment
- H** Hot water bath (100°C)
- S** Self-laminating label
- L** Low-profile (extremely thin) label
- R** Removable

The background colours in the Order Reference column represent the material colour.

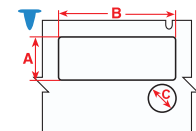
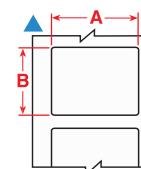
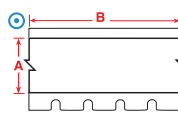
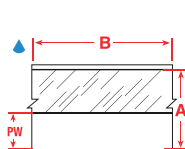
Labels are shown per straw size and in order of label width.

| Diagram | Material | Special Properties | Label Width A (mm) | Label Height B (mm) | Printable Area Width PW (mm) | Printable Area Height PH (mm) | Order Reference | Printer Compatibility | Labels per Roll | Labels per Row |
|----------------------|----------|--------------------|--------------------|---------------------|------------------------------|-------------------------------|-----------------|-----------------------|-----------------|----------------|
| 0.25 ml Straw | | | | | | | | | | |
| | B-427 | F N S | 25.40 | 25.40 | 25.40 | 9.53 | M-49-427 | BMP51, BMP53 | 260 | 1 |
| 0.50 ml Straw | | | | | | | | | | |
| | B-427 | F N S | 25.40 | 63.50 | 25.40 | 19.05 | M-51-427 | BMP51, BMP53 | 110 | 1 |
| Straw Rod | | | | | | | | | | |
| | B-427 | F N S | 27.94 | 6.35 | 27.94 | 6.35 | M-135-427-AW | BMP51, BMP53 | 240 | 1 |
| 0.25 ml Straw | | | | | | | | | | |
| | B-427 | F N S | 44.45 | 25.40 | 44.45 | 9.53 | M-133-427 | BMP51, BMP53 | 140 | 1 |
| 0.50 ml Straw | | | | | | | | | | |
| | B-427 | F N S | 44.45 | 38.10 | 44.45 | 12.70 | M-134-427 | BMP51, BMP53 | 140 | 1 |



Vial / tube labels

- Brady's vial and test tube labels are designed to withstand extreme laboratory solvents like Xylene, Ethanol, Alcohol and DMSO, ensuring that the specimen identification is always legible - and will not smear, fade or fall off.



The background colours in the Order Reference column represent the material colour.

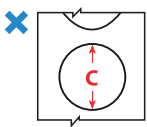
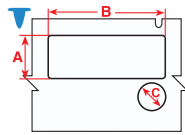
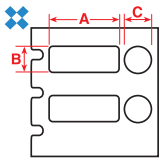
Labels are shown per vial / tube size and in order of label width.

| Diagram | Material | Special Properties | Label Width A (mm) | Label Height B (mm) | Label Length B (m) | Diameter C (mm) | Printable Area Width PW (mm) | Order Reference | Printer Compatibility | Labels per Roll | Labels per Row |
|----------------------|----------|--------------------|--------------------|---------------------|--------------------|-----------------|------------------------------|-----------------|-----------------------|-----------------|----------------|
| 0.6 ml | | | | | | | | | | | |
| | B-499 | F N A | 9.53 | - | 4.88 | - | - | MC-375-499 | BMP51, BMP53 | 1 | 1 |
| 1.0 - 8.0 ml | | | | | | | | | | | |
| | B-498 | F | R 25.40 | 19.05 | - | - | - | M-48-498 | BMP51, BMP53 | 180 | 1 |
| | B-492 | F N H | L 44.45 | 25.40 | - | - | - | M-125-492 | BMP51, BMP53 | 180 | 1 |
| 1.5 - 2.0 ml | | | | | | | | | | | |
| | B-492 | F H | L 41.28 | 15.24 | - | 9.53 | - | M-95-492 | BMP51, BMP53 | 200 | 1 |
| | B-492 | F N H | L 41.91 | 12.70 | - | - | - | M-124-492 | BMP51, BMP53 | 180 | 1 |
| 1.5 ml | | | | | | | | | | | |
| | B-499 | F N A | 12.70 | - | 4.88 | - | - | MC-500-499 | BMP51, BMP53 | 1 | 1 |
| 2.0 - 50.0 ml | | | | | | | | | | | |
| | B-499 | F N A | 19.05 | - | 4.88 | - | - | MC-750-499 | BMP51, BMP53 | 1 | 1 |
| | B-427 | F N S | 19.05 | - | 7.62 | - | 9.53 | MC-750-427 | BMP51, BMP53 | 1 | 1 |
| | B-499 | F N A | 25.40 | - | 4.88 | - | - | MC-1000-499 | BMP51, BMP53 | 1 | 1 |
| 15.0 ml | | | | | | | | | | | |
| | B-7425 | F N A H | 38.10 | 25.40 | - | - | 38.10 | M-31-7425 | BMP51, BMP53 | 250 | 1 |
| - | | | | | | | | | | | |
| | B-7425 | F N A H | 25.40 | 9.53 | - | 9.53 | 25.40 | M-118-7425 | BMP51, BMP53 | 240 | 1 |

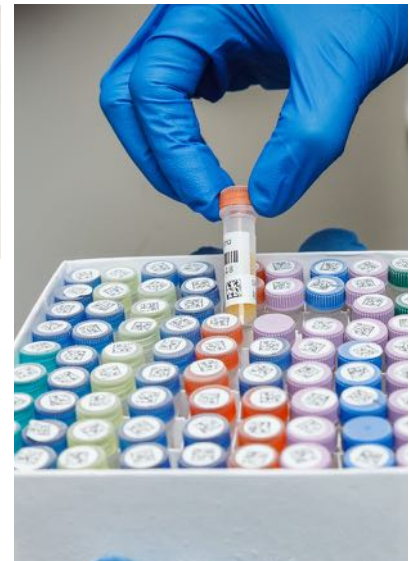
Specimen tracking identification

Vial Top Labels

Save time by using the Vial and Vial top combination labels
- print your information in one go.



- F** Freezer environment
- A** Autoclave environment
- H** Hot water bath (100°C)
- S** Self-laminating label
- L** Low-profile (extremely thin) label
- R** Removable



Labels are shown per vial / tube size and in order of label width.

The background colours in the Order Reference column represent the material colour.

| Diagram | Material | Special Properties | Label Width A (mm) | Label Height B (mm) | Diameter C (mm) | Order Reference | Printer Compatibility | Labels per Roll | Labels per Row |
|---------------------|----------|-------------------------------------|--------------------|---------------------|-----------------|-----------------|-----------------------|-----------------|----------------|
| 0.5 - 1.5 ml | | | | | | | | | |
| ✕ | B-499 | F A | - | - | 9.53 | M-82-499 | BMP51, BMP53 | 240 | 1 |
| ✕ | B-499 | F A | - | - | 9.53 | M-82-499-OR-BK | BMP51, BMP53 | 240 | 1 |
| ✕ | B-499 | F A | - | - | 9.53 | M-82-499-RD-BK | BMP51, BMP53 | 240 | 1 |
| ✕ | B-499 | F A | - | - | 9.53 | M-82-499-YL-BK | BMP51, BMP53 | 240 | 1 |
| ✕ | B-492 | F H L | - | - | 9.53 | M-82-492 | BMP51, BMP53 | 240 | 1 |
| 1.0 - 2.0 ml | | | | | | | | | |
| ✕✕ | B-499 | F A | 25.40 | 9.53 | 9.53 | M-118-499 | BMP51, BMP53 | 240 | 1 |
| ✕✕ | B-492 | F H L | 25.40 | 9.53 | 9.53 | M-118-492 | BMP51, BMP53 | 240 | 1 |
| 1.5 - 2.0 ml | | | | | | | | | |
| ✕✕ | B-499 | F A | 25.40 | 12.70 | 9.53 | M-120-499 | BMP51, BMP53 | 240 | 1 |
| ✕✕ | B-492 | F H L | 25.40 | 12.70 | 9.53 | M-120-492 | BMP51, BMP53 | 240 | 1 |
| ✕✕ | B-499 | F A | 25.40 | 12.70 | 11.18 | M-117-499 | BMP51, BMP53 | 240 | 1 |
| ✕✕ | B-492 | F H L | 25.40 | 12.70 | 11.18 | M-117-492 | BMP51, BMP53 | 240 | 1 |
| ▽ | B-492 | F H L | 41.28 | 15.24 | 9.53 | M-95-492 | BMP51, BMP53 | 200 | 1 |
| ✕ | B-499 | F A | - | - | 12.70 | M-83-499 | BMP51, BMP53 | 240 | 1 |
| ✕ | B-499 | F A | - | - | 12.70 | M-83-499-OR-BK | BMP51, BMP53 | 240 | 1 |
| ✕ | B-499 | F A | - | - | 12.70 | M-83-499-RD-BK | BMP51, BMP53 | 240 | 1 |
| ✕ | B-499 | F A | - | - | 12.70 | M-83-499-YL-BK | BMP51, BMP53 | 240 | 1 |
| ✕ | B-492 | F H L | - | - | 12.70 | M-83-492 | BMP51, BMP53 | 240 | 1 |
| - | | | | | | | | | |
| ✕✕ | B-7425 | F N A H | 25.40 | 9.53 | 9.53 | M-118-7425 | BMP51, BMP53 | 240 | 1 |

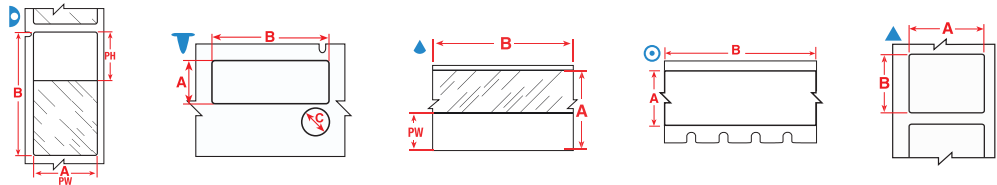
Specimen tracking identification



Conical & large tube labeling

- Brady offers several sample identification labels which are perfect to identify conicals. They are easy to handle, have great flexibility and easily wrap around curved sample containers. Your sample identification label will remain attached and legible, even when the sample is stored in a freezer, in liquid nitrogen or heated in an autoclave.

- F** Freezer environment
- N** Liquid nitrogen environment
- A** Autoclave environment
- H** Hot water bath (100°C)
- S** Self-laminating label
- L** Low-profile (extremely thin) label
- R** Removable



The background colours in the Order Reference column represent the material colour.

Labels are shown per vial / tube size and in order of label width.

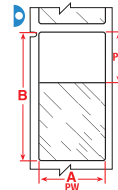
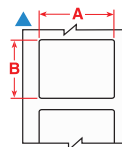
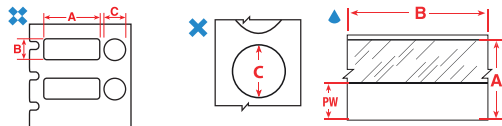
| Diagram | Material | Special Properties | Label Width A (mm) | Label Height B (mm) | Label Length B (m) | Diameter C (mm) | Printable Area Width PW (mm) | Printable Area Height PH (mm) | Order Reference | Printer Compatibility | Labels per Roll | Labels per Row |
|----------------|----------|--------------------|--------------------|---------------------|--------------------|-----------------|------------------------------|-------------------------------|------------------|-----------------------|-----------------|----------------|
| 0.6 ml | | | | | | | | | | | | |
| ⊙ | B-499 | FNA | 9.53 | — | 4.88 | — | — | — | MC-375-499 | BMP51, BMP53 | 1 | 1 |
| 1.0 - 8.0 ml | | | | | | | | | | | | |
| ▲ | B-492 | FNHL | 44.45 | 25.40 | — | — | — | — | M-125-492 | BMP51, BMP53 | 180 | 1 |
| 1.0 - 15.0 ml | | | | | | | | | | | | |
| ▲ | B-492 | FNHL | 22.86 | 25.40 | — | — | — | — | M-156-492 | BMP51, BMP53 | 180 | 1 |
| 1.5 - 2.0 ml | | | | | | | | | | | | |
| ▼ | B-492 | FHL | 41.28 | 15.24 | — | 9.53 | — | — | M-95-492 | BMP51, BMP53 | 200 | 1 |
| ▲ | B-492 | FNHL | 41.91 | 12.70 | — | — | — | — | M-124-492 | BMP51, BMP53 | 180 | 1 |
| 1.5 ml | | | | | | | | | | | | |
| ⊙ | B-499 | FNA | 12.70 | — | 4.88 | — | — | — | MC-500-499 | BMP51, BMP53 | 1 | 1 |
| 2.0 - 50.0 ml | | | | | | | | | | | | |
| ⊙ | B-499 | FNA | 19.05 | — | 4.88 | — | — | — | MC-750-499 | BMP51, BMP53 | 1 | 1 |
| ▲ | B-427 | FN S | 19.05 | — | 7.62 | — | 9.53 | — | MC-750-427 | BMP51, BMP53 | 1 | 1 |
| ⊙ | B-499 | FNA | 25.40 | — | 4.88 | — | — | — | MC-1000-499 | BMP51, BMP53 | 1 | 1 |
| ▲ | B-427 | FN S | 25.40 | — | 7.62 | — | 9.53 | — | MC-1000-427 | BMP51, BMP53 | 1 | 1 |
| ⊙ | B-461 | FNAHSL | 25.40 | — | 7.62 | — | 25.40 | — | MC-1000-461-AW** | BMP51, BMP53 | 1 | 1 |
| 4.0 - 50.0 ml | | | | | | | | | | | | |
| ⊙ | B-461 | FNAHSL | 31.75 | — | 7.62 | — | 31.75 | — | MC-1250-461-AW** | BMP51, BMP53 | 1 | 1 |
| 5.0 - 50.0 ml | | | | | | | | | | | | |
| ▲ | B-427 | FN S | 38.10 | — | 7.62 | — | 12.70 | — | MC-1500-427 | BMP51, BMP53 | 1 | 1 |
| 12.0 - 14.0 ml | | | | | | | | | | | | |
| ▶ | B-461 | FNAHSL | 38.10 | 95.25 | — | — | 38.10 | 31.75 | M-119-461 | BMP51, BMP53 | 80 | 1 |
| 12.0 - 24.0 ml | | | | | | | | | | | | |
| ▲ | B-492 | FNHL | 25.40 | 48.26 | — | — | — | — | M-78-492 | BMP51, BMP53 | 100 | 1 |
| ▲ | B-499 | FNA | 38.10 | 31.75 | — | — | — | — | M-132-499 | BMP51, BMP53 | 160 | 1 |
| 14.0 - 15.0 ml | | | | | | | | | | | | |
| ▲ | B-490 | FNHL | 38.10 | 55.88 | — | — | — | — | M-113-490 | BMP51, BMP53 | 140 | 1 |
| ▶ | B-461 | FNAHSL | 38.10 | 57.15 | — | — | 38.10 | 31.75 | M-129-461 | BMP51, BMP53 | 140 | 1 |
| ▶ | B-427 | FN S | 38.10 | 63.50 | — | — | 38.10 | 19.05 | M-116-427 | BMP51, BMP53 | 80 | 1 |
| 50.0 ml | | | | | | | | | | | | |
| ▶ | B-427 | FN S | 19.05 | 38.10 | — | — | 19.05 | 12.70 | M-90-427 | BMP51, BMP53 | 180 | 1 |
| ▶ | B-427 | FN S | 25.40 | 38.10 | — | — | 25.40 | 12.70 | M-91-427 | BMP51, BMP53 | 180 | 1 |
| ▲ | B-499 | FNA | 25.40 | 48.26 | — | — | — | — | M-128-499 | BMP51, BMP53 | 100 | 1 |
| ▲ | B-490 | FNHL | 38.10 | 98.42 | — | — | — | — | M-114-490 | BMP51, BMP53 | 80 | 1 |

*AW = All White / no transparent area.

Specimen process marking

Centrifuge / microcentrifuge labels

- Brady offers a wide range of Centrifuge, Eppendorf and PCR Labels. When applying a self-laminating label, we recommend you avoid touching the adhesive side of the label when wrapping it around a vial or tube, to ensure maximum adhesion.

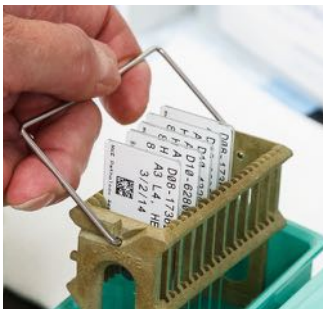


The background colours in the Order Reference column represent the material colour.

Labels are shown per vial / tube size and in order of label width.

| Diagram | Material | Special Properties | Label Width A (mm) | Label Height B (mm) | Label Length B (m) | Diameter C (mm) | Printable Area Width PW (mm) | Printable Area Height PH (mm) | Order Reference | Printer Compatibility | Labels per Roll | Labels per Row |
|----------------------|----------|--------------------|--------------------|---------------------|--------------------|-----------------|------------------------------|-------------------------------|-----------------|-----------------------|-----------------|----------------|
| 0.5 - 0.7 ml | | | | | | | | | | | | |
| ▷ | B-461 | FNAHSL | 9.53 | 28.58 | - | - | 9.53 | 19.05 | M-123-461 | BMP51, BMP53 | 360 | 1 |
| ▷ | B-461 | FNAHSL | 12.70 | 28.58 | - | - | 12.70 | 19.05 | M-122-461 | BMP51, BMP53 | 360 | 1 |
| ▷ | B-461 | FNAHSL | 12.70 | 44.45 | - | - | 12.70 | 19.05 | M-72-461 | BMP51, BMP53 | 180 | 1 |
| ▲ | B-499 | FNA | 19.05 | 12.70 | - | - | - | - | M-11-499 | BMP51, BMP53 | 220 | 1 |
| ▲ | B-490 | FNHL | 31.75 | 9.53 | - | - | - | - | M-112-490 | BMP51, BMP53 | 360 | 1 |
| ▲ | B-492 | FNHL | 31.75 | 9.53 | - | - | - | - | M-112-492 | BMP51, BMP53 | 360 | 1 |
| 0.5 - 1.5 ml | | | | | | | | | | | | |
| ✕ | B-492 | FHL | - | - | - | 9.53 | - | - | M-82-492 | BMP51, BMP53 | 240 | 1 |
| ✕ | B-499 | FA | - | - | - | 9.53 | - | - | M-82-499-RD-BK | BMP51, BMP53 | 240 | 1 |
| 0.6 ml | | | | | | | | | | | | |
| ▲ | B-492 | FNHL | 9.53 | 20.96 | - | - | - | - | M-130-492 | BMP51, BMP53 | 220 | 1 |
| ▲ | B-499 | FNA | 9.53 | 20.96 | - | - | - | - | M-130-499 | BMP51, BMP53 | 220 | 1 |
| ○ | B-499 | FNA | 9.53 | - | 4.88 | - | - | - | MC-375-499 | BMP51, BMP53 | 1 | 1 |
| ▲ | B-499 | FNA | 22.86 | 12.70 | - | - | - | - | M-84-499 | BMP51, BMP53 | 200 | 1 |
| ▲ | B-492 | FNHL | 31.75 | 6.35 | - | - | - | - | M-155-492 | BMP51, BMP53 | 180 | 1 |
| 1.0 - 2.0 ml | | | | | | | | | | | | |
| ✕ | B-492 | FHL | 25.40 | 9.53 | - | 9.53 | - | - | M-118-492 | BMP51, BMP53 | 240 | 1 |
| ✕ | B-499 | FA | 25.40 | 9.53 | - | 9.53 | - | - | M-118-499 | BMP51, BMP53 | 240 | 1 |
| 1.0 - 8.0 ml | | | | | | | | | | | | |
| ▲ | B-492 | FNHL | 12.70 | 25.40 | - | - | - | - | M-131-492 | BMP51, BMP53 | 180 | 1 |
| ▲ | B-499 | FNA | 12.70 | 25.40 | - | - | - | - | M-131-499 | BMP51, BMP53 | 180 | 1 |
| ▷ | B-461 | FNAHSL | 12.70 | 55.88 | - | - | 12.70 | 19.05 | M-74-461 | BMP51, BMP53 | 140 | 1 |
| ▷ | B-461 | FNAHSL | 15.24 | 45.72 | - | - | 15.24 | 25.40 | M-126-461 | BMP51, BMP53 | 180 | 1 |
| ▲ | B-490 | FNHL | 15.24 | 45.72 | - | - | - | - | M-126-490 | BMP51, BMP53 | 180 | 1 |
| ▷ | B-461 | FNAHSL | 15.24 | 66.68 | - | - | 15.24 | 25.40 | M-86-461 | BMP51, BMP53 | 120 | 1 |
| 1.5 - 2.0 ml | | | | | | | | | | | | |
| ▷ | B-461 | FNAHSL | 12.70 | 41.91 | - | - | 12.70 | 19.05 | M-124-461 | BMP51, BMP53 | 180 | 1 |
| ▲ | B-490 | FNHL | 12.70 | 41.91 | - | - | - | - | M-124-490 | BMP51, BMP53 | 180 | 1 |
| ✕ | B-492 | FHL | 25.40 | 12.70 | - | 9.53 | - | - | M-120-492 | BMP51, BMP53 | 240 | 1 |
| ✕ | B-499 | FA | 25.40 | 12.70 | - | 9.53 | - | - | M-120-499 | BMP51, BMP53 | 240 | 1 |
| ✕ | B-492 | FHL | 25.40 | 12.70 | - | 11.18 | - | - | M-117-492 | BMP51, BMP53 | 240 | 1 |
| ✕ | B-499 | FA | 25.40 | 12.70 | - | 11.18 | - | - | M-117-499 | BMP51, BMP53 | 240 | 1 |
| ▲ | B-492 | FNHL | 41.91 | 12.70 | - | - | - | - | M-124-492 | BMP51, BMP53 | 180 | 1 |
| ✕ | B-492 | FHL | - | - | - | 12.70 | - | - | M-83-492 | BMP51, BMP53 | 240 | 1 |
| ✕ | B-499 | FA | - | - | - | 12.70 | - | - | M-83-499-OR-BK | BMP51, BMP53 | 240 | 1 |
| ✕ | B-499 | FA | - | - | - | 12.70 | - | - | M-83-499-RD-BK | BMP51, BMP53 | 240 | 1 |
| 1.5 ml | | | | | | | | | | | | |
| ○ | B-499 | FNA | 12.70 | - | 4.88 | - | - | - | MC-500-499 | BMP51, BMP53 | 1 | 1 |
| ○ | B-461 | FNAHSL | 12.70 | - | 7.62 | - | 12.70 | - | MC-500-461-AW | BMP51, BMP53 | 1 | 1 |
| ○ | B-492 | FNHL | 12.70 | - | 7.62 | - | - | - | MC-500-492 | BMP51, BMP53 | 1 | 1 |
| 2.0 - 50.0 ml | | | | | | | | | | | | |
| ○ | B-499 | FNA | 19.05 | - | 4.88 | - | - | - | MC-750-499 | BMP51, BMP53 | 1 | 1 |
| ▲ | B-427 | FN S | 19.05 | - | 7.62 | - | 9.53 | - | MC-750-427 | BMP51, BMP53 | 1 | 1 |
| ○ | B-499 | FNA | 25.40 | - | 4.88 | - | - | - | MC-1000-499 | BMP51, BMP53 | 1 | 1 |

Specimen process marking



Slide labels

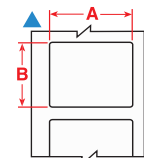
- Brady offers labels specifically designed to identify slides and to resist exposure to harsh chemicals during the slide staining process. They perform well in the hematoxylin and eosin slide staining process and offer superior chemical resistance also useful in other laboratory contexts.

- F** Freezer environment
- N** Liquid nitrogen environment
- A** Autoclave environment
- H** Hot water bath (100°C)
- S** Self-laminating label
- L** Low-profile (extremely thin) label
- R** Removable

Labels are shown in order of label width.

The background colours in the Order Reference column represent the material colour.

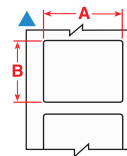
| Diagram | Material | Special Properties | Label Width A (mm) | Label Height B (mm) | Order Reference | Printer Compatibility | Labels per Roll | Labels per Row |
|---------|----------|-------------------------------------|--------------------|---------------------|-----------------|-----------------------|-----------------|----------------|
| ▲ | B-488 | F A | 6.35 | 48.26 | M-81-488 | BMP51, BMP53 | 160 | 1 |
| ▲ | B-481 | F H | 22.86 | 19.05 | M-194-481 | BMP51, BMP53 | 320 | 1 |
| ▲ | B-488 | F A | 22.86 | 22.86 | M-97-488 | BMP51, BMP53 | 280 | 1 |
| ▲ | B-481 | F H | 22.86 | 22.86 | M-97-481 | BMP51, BMP53 | 280 | 1 |
| ▲ | B-481 | F H | 25.40 | 9.53 | M-195-481 | BMP51, BMP53 | 320 | 1 |
| ▲ | B-7425 | F N A H | 38.10 | 25.40 | M-31-7425 | BMP51, BMP53 | 250 | 1 |



Tissue Cassette Labels

Specifically designed to identify tissue cassettes, Brady's B-482 label withstands a temperature range from -80°C to 121°C and offers superior resistance to chemicals used in tissue processing enabling it to retain barcode legibility. The label must be used in combination with Brady's BSP31 Label Attachment System for pre-process tissue cassette identification and complements the use of StainerBondz slide labels as part of a complete histology process.

- F** Freezer environment
- N** Liquid nitrogen environment
- A** Autoclave environment
- H** Hot water bath (100°C)
- S** Self-laminating label
- L** Low-profile (extremely thin) label
- R** Removable



Labels are shown in order of label width.

The background colours in the Order Reference column represent the material colour.

| Diagram | Material | Special Properties | Label Width A (mm) | Label Height B (mm) | Order Reference | Printer Compatibility | Labels per Roll | Labels per Row |
|---------|----------|--------------------|--------------------|---------------------|-----------------|-----------------------|-----------------|----------------|
| ▲ | B-498 | F R | 19.05 | 12.70 | M-11-498 | BMP51, BMP53 | 220 | 1 |
| ▲ | B-482 | F H | 26.67 | 6.35 | M-127-482 | BMP51, BMP53 | 360 | 1 |



B-498 Re-Identify Tissue Cassettes Labels

Tissue cassettes are often re-identified when labs collect samples from various biorepositories. Typically, each laboratory has its own unique way of identifying samples, which creates a need to re-identify samples in a common way.

Brady B-498 post-process labels offer customers the optimal way to organise these specimens and conduct further studies. These labels can be applied directly onto the cassettes, on pure paraffin wax and on top of another label or identifier.

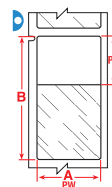
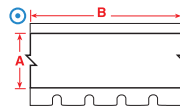
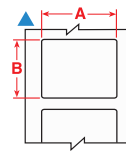
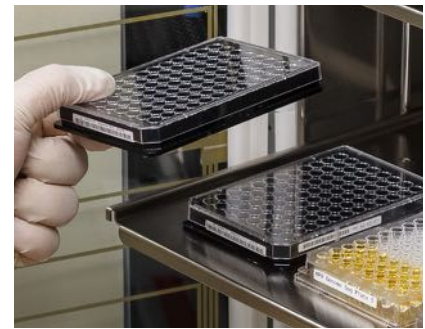
This is not the same as Brady's B-482 tissue cassette solution. **B-498 Re-identify labels are applied after processing and are never used with the BSP31 label attachment system.**

Specimen storage Identification

- F** Freezer environment
- N** Liquid nitrogen environment
- A** Autoclave environment
- H** Hot water bath (100°C)
- S** Self-laminating label
- L** Low-profile (extremely thin) label
- R** Removable

Well plate labels

- When total tracking of all sample collections is required then Brady has a solution for Well plate identification. Our well plate labels guarantee crystal clear text and barcoding for most lab environments.



Labels are shown in order of label width.

The background colours in the Order Reference column represent the material colour.

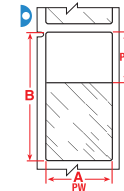
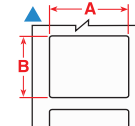
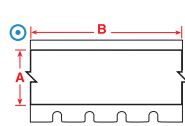
| Diagram | Material | Special Properties | Label Width A (mm) | Label Height B (mm) | Label Length B (m) | Printable Area Height PH (mm) | Printable Area Width PW (mm) | Order Reference | Printer Compatibility | Labels per Roll | Labels per Row |
|---------|----------|--------------------|--------------------|---------------------|--------------------|-------------------------------|------------------------------|--------------------|-----------------------|-----------------|----------------|
| ▲ | B-488 | F A | 6.35 | 48.26 | — | — | — | M-81-488 | BMP51, BMP53 | 160 | 1 |
| ○ | B-499 | F N A | 9.53 | — | 4.88 | — | — | MC-375-499 | BMP51, BMP53 | 1 | 1 |
| ○ | B-595 | F | 9.53 | — | 7.62 | — | — | MC-375-595-WT-BK | BMP51, BMP53 | 1 | 1 |
| ○ | B-595 | F | 9.53 | — | 7.62 | — | — | MC-375-595-YL-BK | BMP51, BMP53 | 1 | 1 |
| ○ | B-499 | F N A | 12.70 | — | 4.88 | — | — | MC-500-499 | BMP51, BMP53 | 1 | 1 |
| ○ | B-595 | F | 12.70 | — | 6.10 | — | — | MC-500-595-CL-BK | BMP51, BMP53 | 1 | 1 |
| ○ | B-595 | F | 12.70 | — | 6.10 | — | — | MC-500-595-CL-WT | BMP51, BMP53 | 1 | 1 |
| ○ | B-595 | F | 12.70 | — | 7.62 | — | — | MC-500-595-BK-WT | BMP51, BMP53 | 1 | 1 |
| ○ | B-595 | F | 12.70 | — | 7.62 | — | — | MC-500-595-BL-WT | BMP51, BMP53 | 1 | 1 |
| ○ | B-595 | F | 12.70 | — | 7.62 | — | — | MC-500-595-GN-WT | BMP51, BMP53 | 1 | 1 |
| ○ | B-595 | F | 12.70 | — | 7.62 | — | — | MC-500-595-OR-BK | BMP51, BMP53 | 1 | 1 |
| ○ | B-595 | F | 12.70 | — | 7.62 | — | — | MC-500-595-RD-WT | BMP51, BMP53 | 1 | 1 |
| ○ | B-595 | F | 12.70 | — | 7.62 | — | — | MC-500-595-WT-BK | BMP51, BMP53 | 1 | 1 |
| ○ | B-595 | F | 12.70 | — | 7.62 | — | — | MC-500-595-WT-RD | BMP51, BMP53 | 1 | 1 |
| ○ | B-595 | F | 12.70 | — | 7.62 | — | — | MC-500-595-YL-BK | BMP51, BMP53 | 1 | 1 |
| ▷ | B-427 | F N S | 19.05 | 38.10 | — | 12.70 | 19.05 | M-90-427 | BMP51, BMP53 | 180 | 1 |
| ○ | B-499 | F N A | 19.05 | — | 4.88 | — | — | MC-750-499 | BMP51, BMP53 | 1 | 1 |
| ○ | B-595 | F | 19.05 | — | 6.10 | — | — | MC-750-595-CL-BK | BMP51, BMP53 | 1 | 1 |
| ○ | B-595 | F | 19.05 | — | 6.10 | — | — | MC-750-595-CL-WT | BMP51, BMP53 | 1 | 1 |
| ○ | B-595 | F | 19.05 | — | 7.62 | — | — | MC-750-595-BK-WT | BMP51, BMP53 | 1 | 1 |
| ○ | B-595 | F | 19.05 | — | 7.62 | — | — | MC-750-595-BL-WT | BMP51, BMP53 | 1 | 1 |
| ○ | B-595 | F | 19.05 | — | 7.62 | — | — | MC-750-595-GN-WT | BMP51, BMP53 | 1 | 1 |
| ○ | B-595 | F | 19.05 | — | 7.62 | — | — | MC-750-595-OR-BK | BMP51, BMP53 | 1 | 1 |
| ○ | B-595 | F | 19.05 | — | 7.62 | — | — | MC-750-595-RD-WT | BMP51, BMP53 | 1 | 1 |
| ○ | B-595 | F | 19.05 | — | 7.62 | — | — | MC-750-595-WT-BK | BMP51, BMP53 | 1 | 1 |
| ○ | B-595 | F | 19.05 | — | 7.62 | — | — | MC-750-595-WT-RD | BMP51, BMP53 | 1 | 1 |
| ○ | B-595 | F | 19.05 | — | 7.62 | — | — | MC-750-595-YL-BK | BMP51, BMP53 | 1 | 1 |
| ▲ | B-432 | F A | 25.40 | 12.70 | — | — | — | M-17-432-CL-BK | BMP51, BMP53 | 280 | 1 |
| ▷ | B-427 | F N S | 25.40 | 38.10 | — | 12.70 | 25.40 | M-91-427 | BMP51, BMP53 | 180 | 1 |
| ○ | B-499 | F N A | 25.40 | — | 4.88 | — | — | MC-1000-499 | BMP51, BMP53 | 1 | 1 |
| ○ | B-595 | F | 25.40 | — | 6.10 | — | — | MC1-1000-595-CL-BK | BMP51, BMP53 | 1 | 1 |
| ○ | B-595 | F | 25.40 | — | 6.10 | — | — | MC1-1000-595-CL-WT | BMP51, BMP53 | 1 | 1 |
| ○ | B-595 | F | 25.40 | — | 7.62 | — | — | MC1-1000-595-BK-WT | BMP51, BMP53 | 1 | 1 |
| ○ | B-595 | F | 25.40 | — | 7.62 | — | — | MC1-1000-595-BL-WT | BMP51, BMP53 | 1 | 1 |
| ○ | B-595 | F | 25.40 | — | 7.62 | — | — | MC1-1000-595-GN-WT | BMP51, BMP53 | 1 | 1 |
| ○ | B-595 | F | 25.40 | — | 7.62 | — | — | MC1-1000-595-OR-BK | BMP51, BMP53 | 1 | 1 |
| ○ | B-595 | F | 25.40 | — | 7.62 | — | — | MC1-1000-595-RD-WT | BMP51, BMP53 | 1 | 1 |
| ○ | B-595 | F | 25.40 | — | 7.62 | — | — | MC1-1000-595-WT-BK | BMP51, BMP53 | 1 | 1 |
| ○ | B-595 | F | 25.40 | — | 7.62 | — | — | MC1-1000-595-WT-RD | BMP51, BMP53 | 1 | 1 |
| ○ | B-595 | F | 25.40 | — | 7.62 | — | — | MC1-1000-595-YL-BK | BMP51, BMP53 | 1 | 1 |

Specimen storage identification

Cryo preservation



- Brady offers a range of labels designed specifically to identify laboratory samples for cryo storage. These labels can be applied to room temperature or to already frozen samples, albeit with a small overlap. The label will remain legible and will stick to the sample container during processing, even when exposed to extreme heat or chemicals like DMSO, Xylene and Ethanol, ensuring secure sample identification in the most challenging laboratory conditions.



The background colours in the Order Reference column represent the material colour.

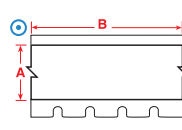
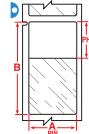
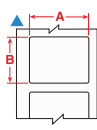
Labels are shown per vial / tube size and in order of label width.

| Diagram | Material | Special Properties | Label Width A (mm) | Label Height B (mm) | Label Length B (m) | Printable Area Width PW (mm) | Printable Area Height PH (mm) | Order Reference | Printer Compatibility | Labels per Roll | Labels per Row |
|-----------------------|----------|--------------------|--------------------|---------------------|--------------------|------------------------------|-------------------------------|-----------------|-----------------------|-----------------|----------------|
| 0.5 - 0.7 ml | | | | | | | | | | | |
| ▶ | B-461 | FNAHSL | 9.53 | 28.58 | – | 9.53 | 19.05 | M-123-461 | BMP51, BMP53 | 360 | 1 |
| ▶ | B-461 | FNAHSL | 12.70 | 28.58 | – | 12.70 | 19.05 | M-122-461 | BMP51, BMP53 | 360 | 1 |
| ▶ | B-461 | FNAHSL | 12.70 | 44.45 | – | 12.70 | 19.05 | M-72-461 | BMP51, BMP53 | 180 | 1 |
| ▲ | B-499 | FNA | 19.05 | 12.70 | – | – | – | M-11-499 | BMP51, BMP53 | 220 | 1 |
| ▲ | B-490 | FNHL | 31.75 | 9.53 | – | – | – | M-112-490 | BMP51, BMP53 | 360 | 1 |
| 0.6 ml | | | | | | | | | | | |
| ▲ | B-499 | FNA | 9.53 | 20.96 | – | – | – | M-130-499 | BMP51, BMP53 | 220 | 1 |
| ▲ | B-492 | FNHL | 9.53 | 20.96 | – | – | – | M-130-492 | BMP51, BMP53 | 220 | 1 |
| ○ | B-499 | FNA | 9.53 | – | 4.88 | – | – | MC-375-499 | BMP51, BMP53 | 1 | 1 |
| ○ | B-461 | FNAHSL | 9.53 | – | 7.62 | 9.53 | – | MC-375-461-AW | BMP51, BMP53 | 1 | 1 |
| ▲ | B-499 | FNA | 22.86 | 12.70 | – | – | – | M-84-499 | BMP51, BMP53 | 200 | 1 |
| 1.0 - 8.0 ml | | | | | | | | | | | |
| ▲ | B-499 | FNA | 12.70 | 25.40 | – | – | – | M-131-499 | BMP51, BMP53 | 180 | 1 |
| ▲ | B-492 | FNHL | 12.70 | 25.40 | – | – | – | M-131-492 | BMP51, BMP53 | 180 | 1 |
| ▶ | B-461 | FNAHSL | 12.70 | 55.88 | – | 12.70 | 19.05 | M-74-461 | BMP51, BMP53 | 140 | 1 |
| ▶ | B-461 | FNAHSL | 15.24 | 45.72 | – | 15.24 | 25.40 | M-126-461 | BMP51, BMP53 | 180 | 1 |
| ▲ | B-490 | FNHL | 15.24 | 45.72 | – | – | – | M-126-490 | BMP51, BMP53 | 180 | 1 |
| ▶ | B-461 | FNAHSL | 15.24 | 66.68 | – | 15.24 | 25.40 | M-86-461 | BMP51, BMP53 | 120 | 1 |
| ▶ | B-461 | FNAHSL | 25.40 | 44.45 | – | 25.40 | 25.40 | M-125-461 | BMP51, BMP53 | 180 | 1 |
| ▲ | B-490 | FNHL | 25.40 | 44.45 | – | – | – | M-125-490 | BMP51, BMP53 | 180 | 1 |
| ▶ | B-461 | FNAHSL | 25.40 | 66.68 | – | 25.40 | 25.40 | M-75-461 | BMP51, BMP53 | 120 | 1 |
| 1.0 - 15.0 ml | | | | | | | | | | | |
| ▲ | B-492 | FNHL | 22.86 | 25.40 | – | – | – | M-156-492 | BMP51, BMP53 | 180 | 1 |
| 1.5 ml | | | | | | | | | | | |
| ○ | B-499 | FNA | 12.70 | – | 4.88 | – | – | MC-500-499 | BMP51, BMP53 | 1 | 1 |
| ○ | B-461 | FNAHSL | 12.70 | – | 7.62 | 12.70 | – | MC-500-461-AW | BMP51, BMP53 | 1 | 1 |
| 2.0 - 50.0 ml | | | | | | | | | | | |
| ○ | B-499 | FNA | 19.05 | – | 4.88 | – | – | MC-750-499 | BMP51, BMP53 | 1 | 1 |
| ○ | B-499 | FNA | 25.40 | – | 4.88 | – | – | MC-1000-499 | BMP51, BMP53 | 1 | 1 |
| ○ | B-461 | FNAHSL | 25.40 | – | 7.62 | 25.40 | – | MC-1000-461-AW | BMP51, BMP53 | 1 | 1 |
| 4.0 - 50.0 ml | | | | | | | | | | | |
| ○ | B-461 | FNAHSL | 31.75 | – | 7.62 | 31.75 | – | MC-1250-461-AW | BMP51, BMP53 | 1 | 1 |
| 12.0 - 14.0 ml | | | | | | | | | | | |
| ▶ | B-461 | FNAHSL | 38.10 | 95.25 | – | 38.10 | 31.75 | M-119-461 | BMP51, BMP53 | 80 | 1 |
| 12.0 - 24.0 ml | | | | | | | | | | | |
| ▲ | B-492 | FNHL | 25.40 | 48.26 | – | – | – | M-78-492 | BMP51, BMP53 | 100 | 1 |
| ▲ | B-499 | FNA | 38.10 | 31.75 | – | – | – | M-132-499 | BMP51, BMP53 | 160 | 1 |

Lean lab identification

Bottles / flasks & dishes

- Brady's labels for bottles, flasks and dishes are easy to handle and flexible. This enables the labels to be placed on curved containers and remain attached and legible, even after being subjected to freezing, liquid nitrogen and heat.



Labels are shown in order of label width.

The background colours in the Order Reference column represent the material colour.

| Diagram | Material | Special Properties | Label Width A (mm) | Label Height B (mm) | Label Length B (m) | Printable Area Width PW (mm) | Printable Area Height PH (mm) | Order Reference | Printer Compatibility | Labels per Roll | Labels per Row |
|---------|----------|--------------------|--------------------|---------------------|--------------------|------------------------------|-------------------------------|-----------------|-----------------------|-----------------|----------------|
| ▲ | B-499 | FNA | 9.53 | 20.96 | — | — | — | M-130-499 | BMP51, BMP53 | 220 | 1 |
| ○ | B-499 | FNA | 9.53 | — | 4.88 | — | — | MC-375-499 | BMP51, BMP53 | 1 | 1 |
| ▲ | B-499 | FNA | 12.70 | 25.40 | — | — | — | M-131-499 | BMP51, BMP53 | 180 | 1 |
| ▲ | B-498 | F R | 12.70 | 25.40 | — | — | — | M-131-498 | BMP51, BMP53 | 180 | 1 |
| ○ | B-499 | FNA | 12.70 | — | 4.88 | — | — | MC-500-499 | BMP51, BMP53 | 1 | 1 |
| ▷ | B-427 | FN S | 19.05 | 38.10 | — | 19.05 | 12.70 | M-90-427 | BMP51, BMP53 | 180 | 1 |
| ○ | B-499 | FNA | 19.05 | — | 4.88 | — | — | MC-750-499 | BMP51, BMP53 | 1 | 1 |
| ▲ | B-498 | F R | 25.40 | 31.75 | — | — | — | M-103-498 | BMP51, BMP53 | 160 | 1 |
| ▷ | B-427 | FN S | 25.40 | 38.10 | — | 25.40 | 12.70 | M-91-427 | BMP51, BMP53 | 180 | 1 |
| ▲ | B-498 | F R | 25.40 | 48.26 | — | — | — | M-128-498 | BMP51, BMP53 | 100 | 1 |
| ○ | B-499 | FNA | 25.40 | — | 4.88 | — | — | MC-1000-499 | BMP51, BMP53 | 1 | 1 |
| ▲ | B-499 | FNA | 38.10 | 31.75 | — | — | — | M-132-499 | BMP51, BMP53 | 160 | 1 |

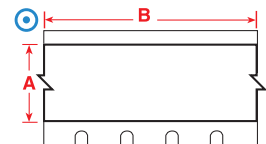
Water dissolvable labels

The B-403 water dissolvable paper label is self-adhesive and extremely easy to apply. Exposing the label to warm water will completely dissolve it within 30 seconds, without damage to the surface it was applied to, and without leaving any residue. The water dissolvable label adheres well to most surfaces, including glass, stainless steel, aluminium, plastic and others. This makes the label a great solution to enable short term identification for containers, crates and glassware with a minimum of waste.



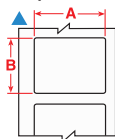
The background colours in the Order Reference column represent the material colour.

| Diagram | Material | Special Properties | Label Width A (mm) | Label Length B (m) | Order Reference | Printer Compatibility | Printer Ribbon Series | Labels per Roll |
|---------|----------|--------------------|--------------------|--------------------|-----------------|-----------------------|-----------------------|-----------------|
| ○ | B-403 | R | 48.25 | 7.62 | MC-1500-403 | BMP51; BMP53 | R6400 | 1 |
| ○ | B-403 | R | 48.25 | 7.62 | MC-750-403 | BMP41; BMP51; BMP53 | R6400 | 1 |



Bottle tamper seal labels

Brady's bottle seal identification provides tracking information with the added feature of security. These labelling materials are designed to fracture easily in order to show signs of sample tampering and to prevent one-piece label removal.



Labels are shown in order of label width.

The background colours in the Order Reference column represent the material colour.

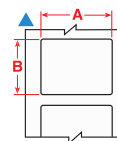
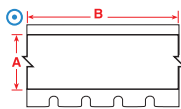
| Diagram | Material | Special Properties | Label Width A (mm) | Label Height B (mm) | Order Reference | Printer Compatibility | Labels per Roll | Labels per Row |
|---------|----------|--------------------|--------------------|---------------------|-----------------|-----------------------|-----------------|----------------|
| ▲ | B-351 | F | 25.40 | 12.70 | M-17-351 | BMP51, BMP53 | 360 | 1 |
| ▲ | B-351 | F | 25.40 | 50.80 | M-20-351 | BMP51, BMP53 | 160 | 1 |

Lean lab identification



General lab identification

Just like a durable sample label lets you know which sample you are holding, a cabinet or drawer label can inform you of the cabinet's content. With proper identification, time spent looking for the right sample or tool can be invested in what really matters. Brady offers a range of materials suitable for identifying drawers, cabinets, shelves, storage units and laboratory equipment.



Labels are shown in order of label width.

The background colours in the Order Reference column represent the material colour

- F** Freezer environment
- N** Liquid nitrogen environment
- A** Autoclave environment
- H** Hot water bath (100°C)
- S** Self-laminating label
- L** Low-profile (extremely thin) label
- R** Removable

| Diagram | Material | Special Properties | Label Width A (mm) | Label Height B (mm) | Label Length B (m) | Order Reference | Printer Compatibility | Labels per Roll | Labels per Row |
|---------|----------|--------------------|--------------------|---------------------|--------------------|--------------------|-----------------------|-----------------|----------------|
| ▲ | B-499 | F N A | 9.53 | 20.96 | — | M-130-499 | BMP51, BMP53 | 220 | 1 |
| ○ | B-499 | F N A | 9.53 | — | 4.88 | MC-375-499 | BMP51, BMP53 | 1 | 1 |
| ○ | B-595 | F | 9.53 | — | 7.62 | MC-375-595-WT-BK | BMP51, BMP53 | 1 | 1 |
| ○ | B-595 | F | 9.53 | — | 7.62 | MC-375-595-YL-BK | BMP51, BMP53 | 1 | 1 |
| ▲ | B-499 | F N A | 12.70 | 25.40 | — | M-131-499 | BMP51, BMP53 | 180 | 1 |
| ▲ | B-498 | F R | 12.70 | 25.40 | — | M-131-498 | BMP51, BMP53 | 180 | 1 |
| ○ | B-499 | F N A | 12.70 | — | 4.88 | MC-500-499 | BMP51, BMP53 | 1 | 1 |
| ○ | B-595 | F | 12.70 | — | 6.10 | MC-500-595-CL-BK | BMP51, BMP53 | 1 | 1 |
| ○ | B-595 | F | 12.70 | — | 6.10 | MC-500-595-CL-WT | BMP51, BMP53 | 1 | 1 |
| ○ | B-595 | F | 12.70 | — | 7.62 | MC-500-595-BK-WT | BMP51, BMP53 | 1 | 1 |
| ○ | B-595 | F | 12.70 | — | 7.62 | MC-500-595-BL-WT | BMP51, BMP53 | 1 | 1 |
| ○ | B-595 | F | 12.70 | — | 7.62 | MC-500-595-GN-WT | BMP51, BMP53 | 1 | 1 |
| ○ | B-595 | F | 12.70 | — | 7.62 | MC-500-595-OR-BK | BMP51, BMP53 | 1 | 1 |
| ○ | B-595 | F | 12.70 | — | 7.62 | MC-500-595-RD-WT | BMP51, BMP53 | 1 | 1 |
| ○ | B-595 | F | 12.70 | — | 7.62 | MC-500-595-WT-BK | BMP51, BMP53 | 1 | 1 |
| ○ | B-595 | F | 12.70 | — | 7.62 | MC-500-595-WT-RD | BMP51, BMP53 | 1 | 1 |
| ○ | B-595 | F | 12.70 | — | 7.62 | MC-500-595-YL-BK | BMP51, BMP53 | 1 | 1 |
| ○ | B-499 | F N A | 19.05 | — | 4.88 | MC-750-499 | BMP51, BMP53 | 1 | 1 |
| ○ | B-595 | F | 19.05 | — | 6.10 | MC-750-595-CL-BK | BMP51, BMP53 | 1 | 1 |
| ○ | B-595 | F | 19.05 | — | 6.10 | MC-750-595-CL-WT | BMP51, BMP53 | 1 | 1 |
| ○ | B-595 | F | 19.05 | — | 7.62 | MC-750-595-BK-WT | BMP51, BMP53 | 1 | 1 |
| ○ | B-595 | F | 19.05 | — | 7.62 | MC-750-595-BL-WT | BMP51, BMP53 | 1 | 1 |
| ○ | B-595 | F | 19.05 | — | 7.62 | MC-750-595-GN-WT | BMP51, BMP53 | 1 | 1 |
| ○ | B-595 | F | 19.05 | — | 7.62 | MC-750-595-OR-BK | BMP51, BMP53 | 1 | 1 |
| ○ | B-595 | F | 19.05 | — | 7.62 | MC-750-595-RD-WT | BMP51, BMP53 | 1 | 1 |
| ○ | B-595 | F | 19.05 | — | 7.62 | MC-750-595-WT-BK | BMP51, BMP53 | 1 | 1 |
| ○ | B-595 | F | 19.05 | — | 7.62 | MC-750-595-WT-RD | BMP51, BMP53 | 1 | 1 |
| ○ | B-595 | F | 19.05 | — | 7.62 | MC-750-595-YL-BK | BMP51, BMP53 | 1 | 1 |
| ▲ | B-432 | F A | 25.40 | 12.70 | — | M-17-432-CL-BK | BMP51, BMP53 | 280 | 1 |
| ▲ | B-498 | F R | 25.40 | 31.75 | — | M-103-498 | BMP51, BMP53 | 160 | 1 |
| ▲ | B-498 | F R | 25.40 | 48.26 | — | M-128-498 | BMP51, BMP53 | 100 | 1 |
| ▲ | B-432 | F A | 25.40 | 48.26 | — | M-78-432-CL-BK | BMP51, BMP53 | 100 | 1 |
| ○ | B-499 | F N A | 25.40 | — | 4.88 | MC-1000-499 | BMP51, BMP53 | 1 | 1 |
| ○ | B-595 | F | 25.40 | — | 6.10 | MC1-1000-595-CL-BK | BMP51, BMP53 | 1 | 1 |
| ○ | B-595 | F | 25.40 | — | 6.10 | MC1-1000-595-CL-WT | BMP51, BMP53 | 1 | 1 |
| ○ | B-595 | F | 25.40 | — | 7.62 | MC1-1000-595-BK-WT | BMP51, BMP53 | 1 | 1 |
| ○ | B-595 | F | 25.40 | — | 7.62 | MC1-1000-595-BL-WT | BMP51, BMP53 | 1 | 1 |
| ○ | B-595 | F | 25.40 | — | 7.62 | MC1-1000-595-GN-WT | BMP51, BMP53 | 1 | 1 |
| ○ | B-595 | F | 25.40 | — | 7.62 | MC1-1000-595-OR-BK | BMP51, BMP53 | 1 | 1 |
| ○ | B-595 | F | 25.40 | — | 7.62 | MC1-1000-595-RD-WT | BMP51, BMP53 | 1 | 1 |
| ○ | B-595 | F | 25.40 | — | 7.62 | MC1-1000-595-WT-BK | BMP51, BMP53 | 1 | 1 |
| ○ | B-595 | F | 25.40 | — | 7.62 | MC1-1000-595-WT-RD | BMP51, BMP53 | 1 | 1 |
| ○ | B-595 | F | 25.40 | — | 7.62 | MC1-1000-595-YL-BK | BMP51, BMP53 | 1 | 1 |
| ▲ | B-499 | F N A | 38.10 | 31.75 | — | M-132-499 | BMP51, BMP53 | 160 | 1 |

This section provides a quick reference to Brady materials listed throughout this catalogue, including basic attributes, applications and regulatory compliance where applicable. For more detailed material attribute and performance information, please refer to the material's Technical Data Sheet, listed at www.bradyeurope.com/tds.

| Brady Material No. | Material | Finish | Colour | Temp (°C) (Tested for 30 days) | | Performance Attributes | Properties & Applications | Approval/Compliance |
|--------------------|-------------------------------|--------|-------------------|-----------------------------------|----------|---------------------------|--|---|
| | | | | Min. | Max. | | | |
| B-109 | Polyethylene Tag | Matt | White | -40 °C | 49 °C | | White polyethylene tag material with matt finish. Excellent multi-purpose tag for identifying multiconductor cables, inventory, safety warning repair and work-in-processing manufacturing. Good weatherability, humidity resistance and legibility after solvent exposure. | – |
| B-145 | Polyethylene Tag | Matt | Grey | -40 °C | 100 °C | | This multipurpose material can be used for a variety of tag applications including identification of multiconductor cables, equipment, safety warning repair and workinprogress. | – |
| B-342 | Heat-shrink Polyolefin Sleeve | Matt | White | -55 °C | 130.6 °C | | 3:1 ratio heat shrinkable wire marking sleeve that fits snugly around wires for identification and protection. Fade-resistant and flame retardant. Also available in yellow, black, blue, brown, green, gray, orange, pink, red, violet. | UL Recognised to UL224; SAE-AMS-DTL-23053/5 C (Class 1); SAE-AS-81531 |
| B-351 | Tamper-resistant Vinyl | Matt | White | -40 °C | 80 °C | | White vinyl material with matt finish. Tamper evident material fractures to show signs of product tampering and prevent one-piece removal. | – |
| B-403 | Paper | Matt | Black on White | -40 °C | 78 °C | | White dissolvable paper. Dissolves completely in water leaving no adhesive residue, ideal for temporary labeling applications. | – |
| B-412 | Polypropylene Tag | Matt | White | -40 °C | 100 °C | | White polypropylene tag material with matt finish. Offers high print legibility and high tensile strength. | – |
| B-422 | Polyester | Gloss | White | -40 °C | 100 °C | | White material stock with glossy finish and 2 mils of adhesive for rough surface applications, including low surface energy plastics. Designed to withstand solvent exposure. UL rated for surfaces commonly used in solar panel manufacturing. Also used for component identification, barcoding, asset and inventory tracking. | UL Recognised; CSA Accepted |
| B-425 | Polypropylene | Matt | White | -70 °C | 80 °C | | White polypropylene material stock with matt finish for thermal transfer printing or write-on applications. Excellent solvent resistance and print performance; not recommended for long-term outdoor use. | UL Recognised; CSA Accepted; Halogen Free (DIN VDE 0472/part 815) |
| B-427 | Self-laminating Vinyl | Matt | White/Transparent | -40 °C | 60 °C | | Thermal transfer printable, self-laminating material. These labels have a printable area with a clear "tail" that wraps around the marker. The "tail" serves as overlamine to protect the print. Superior resistance to abrasion, solvents, water, oil and dirt. Also available in grey, brown, green, yellow, blue, red, purple, orange | UL Recognised to UL969 Labelling and Marking Standard when printed with the Brady Series R4300 and R6200 ribbons. See UL files MH17154 for specific details. Brady customers should specify at purchase if they require UL Recognised B-427 labels. Brady sells both UL Recognised B-427 labels and non-approved labels depending on customer requirements. |
| B-428 | Metallised Polyester | Matt | Silver | -70 °C | 120 °C | | Thermal transfer printable metallised polyester with matt finish. Withstands solvents and variable temperatures. Excellent for serial and rating plate applications with name-plate quality and a metal-looking finish. | UL Recognised; CSA Accepted; Halogen Free (DIN VDE 0472/part 815) |
| B-432 | Polyester | Gloss | Clear | -40 °C | 100 °C | | Translucent, high performance polyester material with a glossy finish. Thermal transfer printable. Very similar to B-430, but has a thicker layer of acrylic adhesive for better adherence to rough surface applications. | UL Recognised; CSA Accepted |
| B-461 | Self-laminating Polyester | Matt | White/Transparent | -196 °C | 110 °C | | Permanent adhesive; suitable for liquid nitrogen application if material is wrapped around itself, as in self-lamination; write-on capabilities. Temperature range increases to 121 °C when used in autoclave process | – |
| B-7425 | Polypropylene | Matt | Black on White | -80 °C | 70 °C | | White Polypropylene material. Ideal for laboratory identification such as vials, centrifuge tubes and test tubes. For freezer or liquid nitrogen applications, B-7425 must be applied prior to being frozen. | – |

Master material index

| Brady Material No. | Material | Finish | Colour | Temp (°C) (Tested for 30 days) | | Performance Attributes | Properties & Applications | Approval/Compliance |
|--------------------|-------------------------------|------------|--------|-----------------------------------|--------|------------------------|--|---|
| | | | | Min. | Max. | | | |
| B-481 | StainerBondz™ Polyester | Matt | White | -80 °C | 130 °C | | White polyester will remain resistant when exposed to xylene and other chemicals that are commonly used in the slide staining process | — |
| B-482 | Polyester | Matt | White | | | | The B-482 label material, combined with Brady's R6400 ribbon, provides the durability and print quality that histology and anatomic pathology labs need for accurate, identifiable specimen labelling. Paraffin and solvent resistant. | — |
| B-483 | Polyester | Gloss | White | -40 °C | 120 °C | | White polyester thermal transfer printable material with glossy finish and aggressive adhesive specifically designed for powder coated surfaces. | UL Recognised; CSA Accepted |
| B-488 | Polyester | Matt | White | -40 °C | 145 °C | | White polyester thermal transfer printable material, similar to B-423, but with matt finish. Widely used for component identification, barcoding, asset and inventory tracking. | UL Recognised; CSA Accepted |
| B-490 | Freezerbondz™ Polyester | Matt | White | -196 °C | 130 °C | | Can be applied to frozen surfaces including glass and polypropylene stored in liquid nitrogen, except for Vial Tops. Material must slightly overlap itself. | — |
| B-492 | Freezerbondz™ Polyester | Matt | White | -196 °C | 110 °C | | Ultra thin; can label frosted/frozen (with overlap) or room temperature labels and lasts in liquid nitrogen and hot water baths | — |
| B-498 | Vinyl Cloth | Semi-gloss | White | -40 °C | 80 °C | | White vinyl cloth label material with glossy finish. The adhesive and cloth backing give excellent holding power, while being repositionable and removing cleanly. | UL Recognised |
| B-499 | Nylon Cloth | Matt | White | -40 °C | 90 °C | | Nylon cloth material with matt finish. The adhesive allows labelling in environments with heat, cold, oil and dirt. Also available in orange, red and yellow. | UL Recognised; CSA Accepted; Halogen Free (DIN VDE 0472/part 815) Approvals are for White material only |
| B-584 | Reflective Tape | Gloss | Orange | -40 °C | 70 °C | | Suitable for outdoor use. Also available in silver and yellow. | — |
| B-595 | Vinyl | Gloss | White | -40 °C | 82 °C | | Durable, low-shrink vinyl with our most aggressive adhesive. Conforms to irregular, curved, rough and highly textured surfaces (painted cinder blocks, uneven wood, textured plastics, paper-jacketed pipes, powder-coated surfaces). Adheres to "difficult" low-surface energy items (PVC piping, blow-moulded equipment cases, ABS plastics, recycled plastics). Available in a wide range of colours. | BS5609:1986 Section 2 and section 3 |
| B-7641 | Heat-shrink Polyolefin Sleeve | Matt | White | -55 °C | 105 °C | | 2:1 ratio heat shrinkable, zero halogen wire marking sleeves. The wire marking sleeves offer outstanding fire safety properties and minimal smoke emission. Also available in yellow. | BS-6853 (1999) Vehicle Category 1A; EN-45545-2, requirement 24, Vehicle Category HL3; Zero Halogen |



WorkHorse™ Labels



MetaLabel™ Series



ToughBond™ Series



Defender™ Series



CleanLift™ Series



UltraTemp™ Series



Abrasion resistance



Electrostatic dissipative



Fuel/oil resistance



High heat resistance



Low temperature resistance



Removable



Solvent/chemical resistance



Tamper-indicating



Ultra-aggressive adhesive

Printer specifications

| PRINTER | |
|--------------------------|--|
| Description | BMP51 Label Printer |
| Includes | This printer ships in a hard case with a Rechargeable Lithium Ion Battery, USB Cable, AC adaptor, power cord, Product CD, Brady Printer Drivers CD, Quick Start Guide, a Bluetooth network card and an MC1-1000-422 cartridge. |
| Applications | Wire & Cable Marking; Patch Panel Identification; Control Panel & Component Marking; Terminal Block Marking; Voice & Data Communication; Electrical Component Marking; General & Industrial Marking; Laboratory Identification |
| Print Speed (mm/sec) | 25.40 |
| Internal Memory Capacity | 48 MB - up to 25.000 labels |
| Cutter | Manual cut Between labels or at end of print job With label retention |
| Keyboard Type | QWERTY |
| Colour Capability | Monocolour |
| Language Support | Danish, Dutch, English, Finnish, French, German, Italian, Norwegian (Bokmål), Portuguese, Spanish, Swedish |
| Portability | Yes |
| Weight (kg) | 1.20 |
| Size W x D x L (mm) | 107 x 106 x 328 |
| Drop Test | up to 1.8 metres |
| Operating Temperature | 5°C - 40°C |
| Operating Humidity | 20%-90% (non-condensing) |
| Warranty | 2 years |

| MEDIA SUPPORTED | |
|------------------------------|--|
| Materials Supported | 200+ standard parts: continuous tapes and die cut labels |
| Format | Media supplied in Cartridge with Ribbon |
| Compatible Media | M-, MC-, MC1- |
| Continuous vs Die-cut Labels | Continuous Tape & Die Cut Labels |
| Custom Labels | No |
| Smart Cell | Yes |
| Calibration | Automated through Smart Cell |
| Max. Label Width (mm) | 38.10 mm |
| Min. Label Width (mm) | 6.40 mm |
| Recommended Usage per Day | 500 |

| POWER SUPPLY | |
|---------------|--|
| Auto Shut Off | Yes |
| Battery Type | Lithium Ion Battery |
| Power Supply | AC Adaptor, 8 AA Batteries, Rechargeable Battery |

| FONTS/GRAPHICS/SYMBOLOLOGIES | |
|------------------------------|--|
| Text Sizes (pt) | 4 - 102 pt |
| Built-in Fonts | Brady Alpine Brady Fixed Width |
| Built-in Symbols | 450 symbols included |
| Symbol Categories | Arrows Electrical Exit Datacom Fire Safety First Aid GHS/CLP Laboratory Mandatory Packaging Miscellaneous Personal Protective Equipment Prohibition Public Information Safety Warning WHIMIS |
| Bar Code Capability | Yes |
| Bar Code Type | Code 39 and 128, other via software |

| DISPLAY | |
|--------------------|-----------------------|
| Display | Monocolour LCD Screen |
| Display Resolution | 320 x 240 px |
| Display Size | 68.58 mm x 43.18 mm |

| PRINTING FUNCTIONS | |
|------------------------|---|
| Printing Functions | Banner Serialisation Mirror Rotate Reverse Auto Format Justification Vertical Fixed Length Multi-copy Print Preview Date/Time Stamp Frame Feature |
| Serialisation | Simple & Simultaneous & Single Advanced & Multiple Advanced |
| Printing Modes | Flags Terminal Block Patch Panel Wire Wrap |
| Print Resolution (dpi) | 300 |

| SOFTWARE & CONNECTIVITY | |
|-------------------------|--|
| Connectivity Options | USB, Bluetooth. Optional: Ethernet, WiFi |
| Software Compatibility | Brady Workstation, LabelMark, CodeSoft |

| COMPLIANCE | |
|---------------------|----------------|
| Approval/Compliance | CE, WEEE, RoHS |

Printers

| Order Reference | Art. No. | Description |
|----------------------|----------|--|
| BMP51 PRINTER EU | 710894 | BMP51 Label Printer - EU |
| BMP51-EU-PWID | 198630 | BMP51 Label Printer - EU with Brady Workstation PWID Suite |
| BMP51 PRINTER KIT UK | 710898 | BMP51 Label Printer - UK |
| BMP51-UK-PWID | 198631 | BMP51 Label Printer - UK with Brady Workstation PWID Suite |



The Basic Suite is included with every printer, all you need to do is download it. Workstation.BradyID.com/Free



Quickly identify your products and wires with customised text or graphical labels, using serialised or imported data. Workstation.BradyID.com/ProductandWire



Printer Kits

| Order Reference | Art. No. | Description |
|-----------------|----------|--------------------------|
| BMP51-EU-ELEC* | 198654 | BMP51 Electrical Kit EU |
| BMP51-UK-ELEC* | 198657 | BMP51 Electrical Kit UK |
| BMP51-EU-LAB*** | 198655 | BMP51 Laboratory Kit EU |
| BMP51-UK-LAB*** | 198658 | BMP51 Laboratory Kit UK |
| BMP51-EU-DATA** | 198653 | BMP51 TeleDatacom Kit EU |
| BMP51-UK-DATA** | 198656 | BMP51 TeleDatacom Kit UK |

*Freezerbondz Polyester; Heat-shrink Polyolefin Sleeve; Metallised Polyester; Nylon Cloth; Polyester; Polyethylene Tag; Polypropylene; Polypropylene Tag; Reflective Tape; Self-laminating Polyester; Self-laminating Vinyl; StainerBondz Polyester; Tamper-resistant Vinyl; Vinyl; Vinyl Cloth

**This printer ships in a hard case with a Rechargeable Lithium Ion Battery, USB Cable, AC adaptor with power cord, Magnet accessory, Product CD, Brady Printer Drivers CD, Quick Start Guide, a Bluetooth network card, a Brady Workstation Product & Wire Identification Suite, M-132-499, M1-115-427 and an MC1-1000-422 cartridge.

***This printer ships in a hard case with a Rechargeable Lithium Ion Battery, USB Cable, AC adaptor with power cord, Product CD, Brady Printer Drivers CD, Quick Start Guide, a Bluetooth network card, a Brady Workstation Product & Wire Identification Suite, M-122-461, M-131-499 and an MC1-1000-422 cartridge.



Accessories

| Art. No. | Order Reference | Description |
|----------|---------------------------|--|
| 142261 | UBP-Li-ION-AC-120v | Universal Li-ion Battery Pack with AC Adaptor/ Battery Pack US |
| 710902 | UBP-Li-ION-AC-EUR | Universal Li-ion Battery Pack with AC Adaptor/ Battery Pack EU |
| 710903 | UBP-Li-ION-AC-UK | Universal Li-ion Battery Pack with AC Adaptor/ Battery Pack UK |
| 114883 | M41/50/61/71/611-AC-BC-NA | AC Adaptor - USA 120V |
| 710612 | M41/50/61/71/611-AC-BC-EU | AC Adaptor - Europe 220V |
| 710613 | M41/50/61/71/611-AC-BC-UK | AC Adaptor - UK 240V |
| 142260 | BMP-UBP 12V | Rechargeable Lithium Ion battery for the BMP51 printer |
| 143115 | M50-BATT-TRAY | BMP50 Series Spare Battery Tray for 8 AA batteries |
| 143109 | M50-HC | BMP50 Series Hard Carry Case |
| 121423 | M50-SC | BMP50 Series Soft Carry Case |
| 143108 | M50-MAGNET | BMP50 Series Magnet Accessory |
| 142265 | NET-BT | Bluetooth Network Card |
| 142267 | NET-LAN | LAN Network Card |
| 142266 | NET-WIFI | WiFi Network Card |



Magnet

2 year warranty on all Brady portable printers

Brady offers a 2 year warranty on every Brady Mobile Printer sold. This manufacturer's warranty is completely free and highlights Brady's commitment to quality and on-the-job reliability.

Flash this QR Code to access to all the details about the Brady warranty.



What if you want more extensive support ?

Brady offers Assist Base, Assist Field and Assist Custom service contracts which include priority assistance for 1, 3 or 5 years to guarantee continued support and the ultimate printer reliability, even in demanding working environments. These agreements also include many great extras versus our free, standard 2 year warranty, such as: spare parts, a solution within 2 business days, free annual preventative maintenance, repair transportation costs, priority access to the technical service team or even a specialist at your premises.

Get all of these extra assurances at the cost of just 1 flat fee repair!



Our training and setup service

- **Brady Setup Base** : Stress free installation of your Brady printer and software by screensharing. We help you produce your first labels.
- **Brady Setup Field** : Stress free installation of your Brady printer and software by a Brady specialist at your premises. We help you produce your first labels.
- **Brady Training Half/Whole day** : Hands-on training by a Brady specialist at your premises.

Please contact us for additional information!

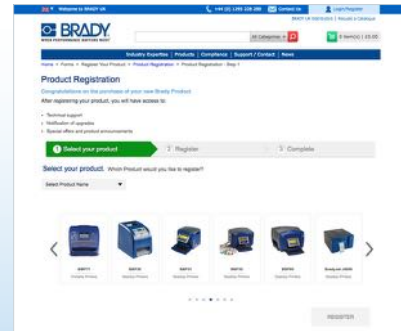
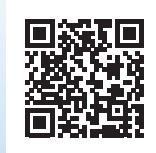


Register your Product

After registering your product you will have access to:

- Technical support
- Notification of updates
- Special offers and product announcements

www.bradyeurope.com/registration



Reliable identification and safety solutions

When temperature, chemicals, pressure or friction make durable identification difficult, and when identification is critical for traceability, production efficiency or workplace safety, Brady responds with expertise, material science knowledge and hassle free label printing solutions to answer your identification challenges.



Laboratory identification
EUR-M-513-EN



Product & wire identification
EUR-O-501-EN



Safety and facility identification
EUR-M-801-EN

Enter the EUR-number of the catalogues above in the website's search engine to get the most recent updates.

Discover more reliable identification - and safety solutions in the Brady catalogues on www.bradyeurope.com/catalogues!

Africa

Randburg, South Africa
 Tel.: +27 11 704 3295
 Email: africa@bradycorp.com

Benelux

Zele, Belgium
 Tel.: +32 (0) 52 45 78 11
 Email: benelux@bradycorp.com

Central & Eastern Europe

Bratislava, Slovakia
 Tel.: +421 2 3300 4800
 Email: central_europe@bradycorp.com

Denmark

Odense
 Tel.: +45 66 14 44 00
 Email: denmark@bradycorp.com

France

Roncq
 Tel.: +33 (0) 3 20 76 94 48
 Email: france@bradycorp.com

Germany, Austria & Switzerland

Egelsbach, Germany
 Tel.: +49 (0) 6103 7598 660
 Email: germany@bradycorp.com

Hungary

Budaörs
 Tel.: +36 23 500 275
 Email: central_europe@bradycorp.com

Italy

Gorgonzola
 Tel.: +39 02 26 00 00 22
 Email: italy@bradycorp.com

Middle East FZE

Dubai, UAE
 Tel.: +971 4881 2524
 Email: me@bradycorp.com

Norway

Kjeller
 Tel.: +47 70 13 40 00
 Email: norway@bradycorp.com

Romania

Bucharest
 Tel.: +40 21 202 3032
 Email: central_europe@bradycorp.com

Russia

Moscow
 Tel.: +7 495 269 47 87
 Email: central_europe@bradycorp.com

Spain & Portugal

Madrid, Spain
 Tel.: +34 900 902 993
 Email: spain@bradycorp.com,
 portugal@bradycorp.com

Sweden, Finland, Baltic states

Kista, Sweden
 Tel.: +46 (0) 8 590 057 30
 Email: sweden@bradyeurope.com

Turkey

Istanbul
 Tel.: +90 212 264 02 20 / 264 02 21
 Email: turkey@bradycorp.com

UK & Ireland

Banbury, UK
 Tel.: +44 (0) 1295 228 288
 Email: uk@bradycorp.com

Our mission is to identify and protect people, products and places



To help minimise our impact on the environment, Brady limits its number of reprints.

Updated versions are always available for download on www.bradyeurope.com.

 Search for: EUR-M-409-EN



Y1863893

Your distributor

25/11/2019